



Bridges Court Road, SW11

£593 Per week

A well presented two bedroom flat with a river-facing balcony. The flat is located on the fourth floor with an open plan sitting room/kitchen. Wood floors throughout. There is an underground parking space available by separate negotiation and a concierge service.

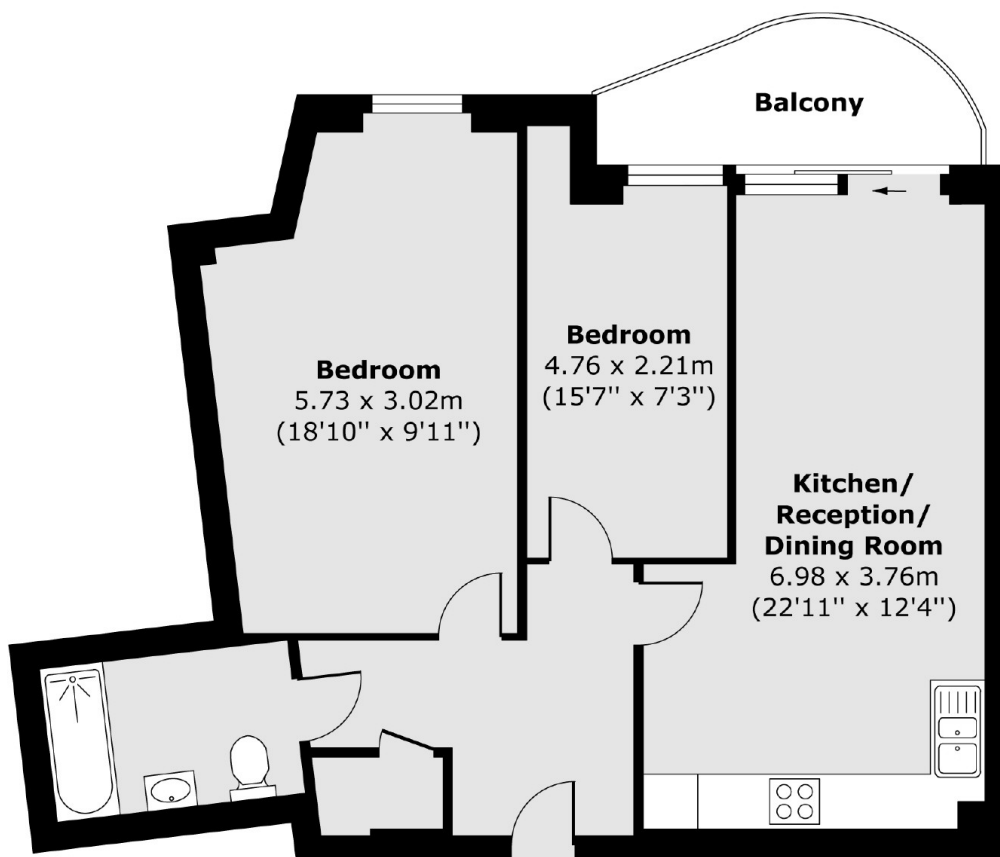
Orbis Wharf is on the Thames Riverside path, a direct route for cycling/walking into London and an easy stroll to Battersea Park. The Thames Clipper boat and Clapham Junction are both a short walk away

Features

- Two Double Bedrooms
- One Bathroom
- Balcony
- Wood Floors
- Riverside Property
- Concierge

Bridges Court Road, London, SW11

Fourth Floor



Total area (approx.) 63.61 sq. m (685 sq. ft)
Balcony area (approx.) 5.35 sq. m (58 sq. ft)