



Wey Meadows, KT13  
£1,700,000

Waterview  


This beautifully designed river home sits on a large plot of landscaped gardens with 60ft of river frontage within this picturesque setting.

Wey Meadows is a secluded private road located within a short walk of Weybridge Town centre.





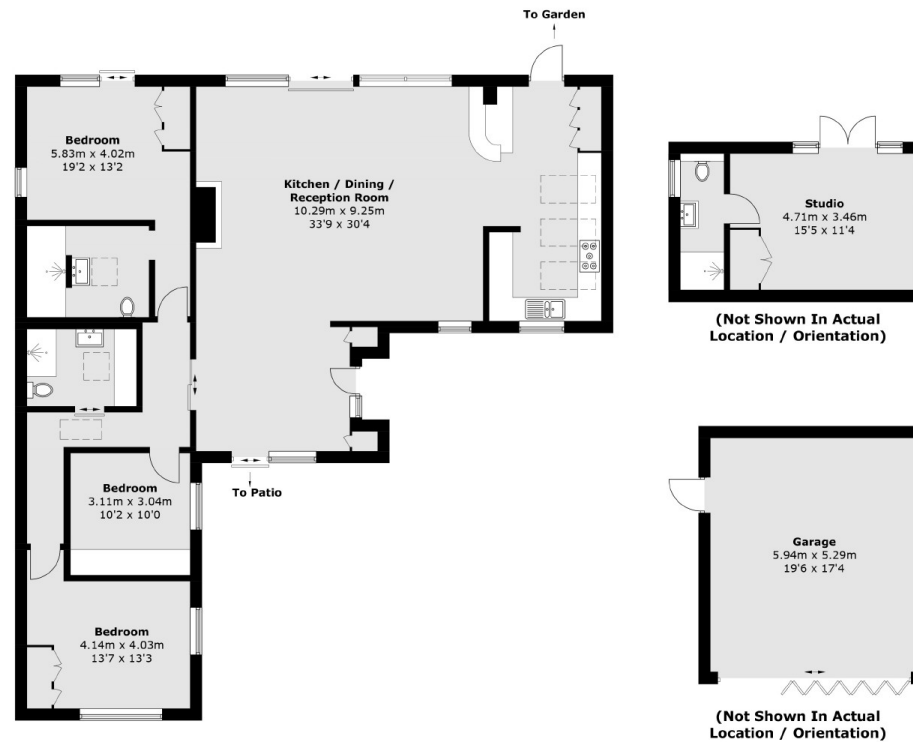
Accommodation is made up of impressive entrance to a large open plan living space with high vaulted ceilings and full height glazed rear overlooking the riverside terrace and garden. The main reception area has a modern feature fireplace and opens onto a dining area and stylish integrated kitchen with breakfast bar. The spacious principal suite has direct access to the river terrace, built-in wardrobes and a stunning en-suite. There are two further double bedrooms with an additional high quality family bathroom. The house is approached via electric gates to a parking area and large garage with driveway running through the manicured gardens to the main house. Within the grounds is a beautiful home office with en-suite shower room. To the riverside is a terrace which overlooks the pretty gardens and river with a 60ft private moorings.

### Features

River Home  
Beautifully Designed  
Landscaped Gardens  
60ft Moorings  
Stylish Interiors  
No Chain



# Wey Meadows, Weybridge, KT13



Total area (approx.): 142.4 sq. m (1,532.8 sq. ft)  
Studio: 20.9 sq. m (225.0 sq. ft)  
Garage: 32.3 sq. m (347.7 sq. ft)

## Contact

To arrange a viewing call our office on the number below or visit our website.



Energy Rating: C. We aim to make our particulars both accurate and reliable. However they are not guaranteed; nor do they form part of an offer or contract. If you require clarification on any points then please contact us, especially if you're traveling some distance to view. Please note that appliances and heating systems have not been tested and therefore no warranties can be given as to their good working order.



W. H. Lewis