



Berkeley Court, KT13
£1,100,000

Waterview


A stunning newly built, four double bedroom home set on this picturesque stretch of Broadwater Lake offering parking for two cars and stunning unobstructed views over the lake and greenery beyond.

Waterview Place is a Lakeside development a stones throw away from Weybridge High Street which offers fantastic shops, café's, restaurants, pubs and shops.





This stunning home benefits from a bespoke kitchen with bi-folding doors leading to a full width terrace and stunning views over Broadwater Lake. On this floor there is a large study and W.C.

On the lower ground floor there is a large utility room/bedroom with en-suite and a further large reception room with access to the well landscaped tiered garden with direct access to the lake.

The first floor consists of the large principal bedroom and luxury en-suite and a further double bedroom. The second floor has two further double bedrooms and family bathroom.

To the front of the property there is a driveway with parking for two cars.

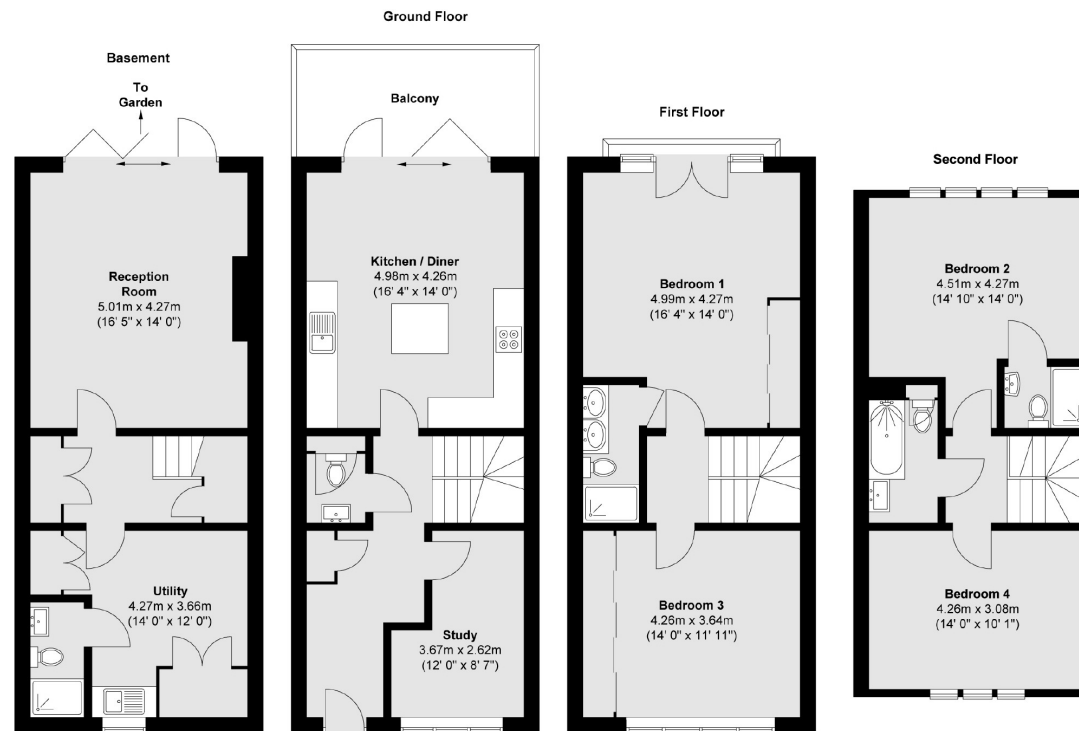
On the lake side there is a pretty garden with direct access to Broadwater Lake.

Features

Waterside Home
Four/Five Bedrooms
Stunning Views
Two Parking Spaces
Newly Built Home
Ideal Location



Berkeley Court, Weybridge, KT13



Total area (approx.) : 177.8 sq. m (1914 sq. ft)
Total balcony area (approx.) : 10.4 sq. m (112 sq. ft)

Contact

To arrange a viewing call our office on the number below or visit our website.



Energy Rating: B. We aim to make our particulars both accurate and reliable. However they are not guaranteed; nor do they form part of an offer or contract. If you require clarification on any points then please contact us, especially if you're traveling some distance to view. Please note that appliances and heating systems have not been tested and therefore no warranties can be given as to their good working order.

