



Parke Road, TW16
£1,150,000

Waterview


A stunning two/three bedroom riverside home that has been completely refurbished, set overlooking The Thames on this exclusive private road in Lower Sunbury.

Parke Road is a pretty private road running parallel to The Thames in the heart of Sunbury Village.





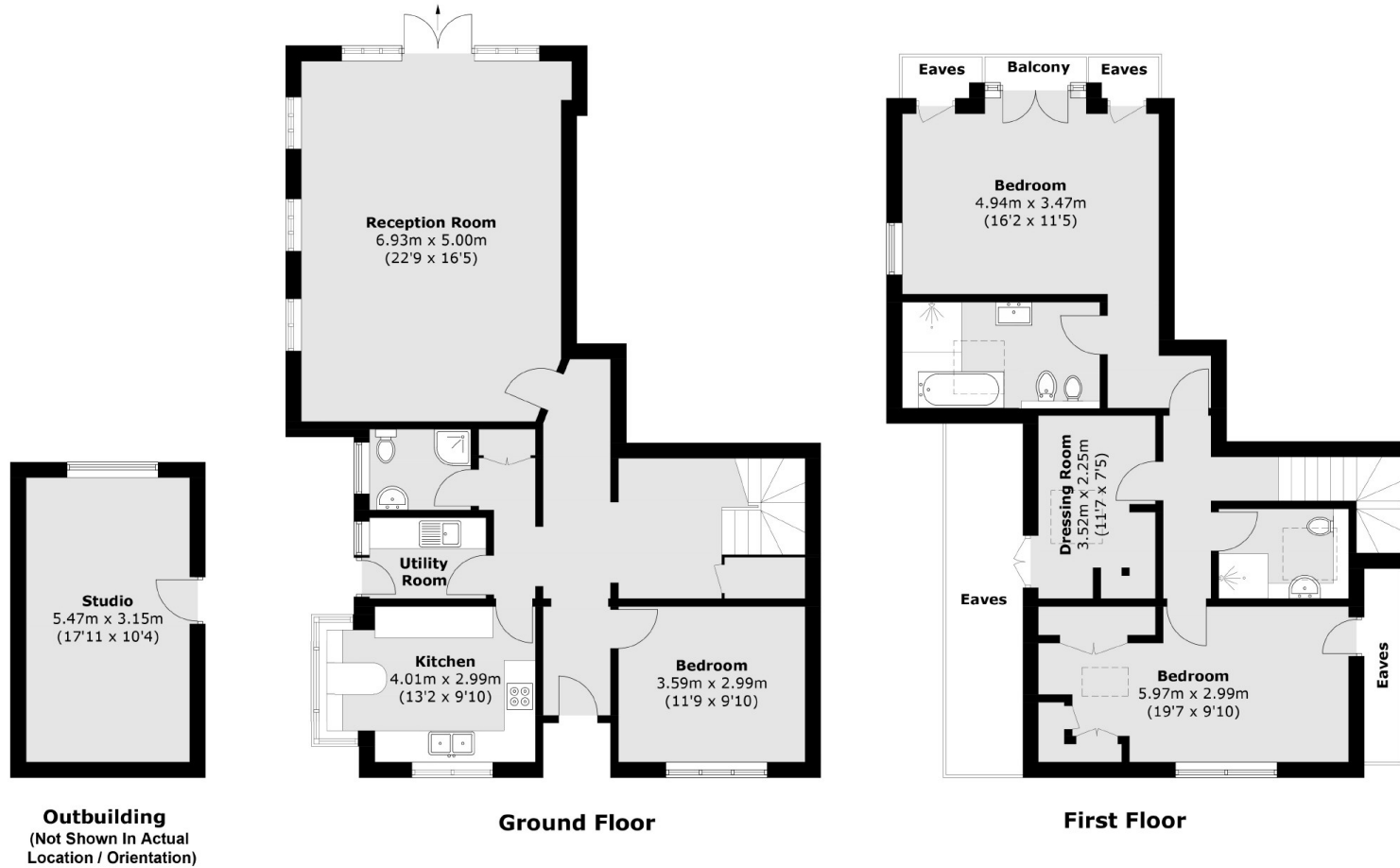
Accommodation is made up of a large entrance hall with solid wood flooring, a stylish modern kitchen with breakfast eating area, utility room, and spacious double reception has continued wood flooring and fantastic views of the river with doors to terrace. Upstairs the spacious Master bedroom has doors to a river facing balcony and en-suite bathroom. There is a spacious dressing room with built-in storage, and second large double bedroom and further shower room. To the front there is a gravel driveway with parking for several cars. The garage has been converted into a beautiful treatment and therapy room. To the rear the South facing garden has a raised terrace/eating area with glass balustrade and lower terrace, with lawned garden leading to a 28ft private mooring.

Features

Riverside Home
Beautifully Refurbished
Private Mooring
Village Location
Three Bedrooms
Three Bathrooms



Parke Road, Sunbury on Thames, TW16



Total area (approx.): 158.8 sq. m (1,709.3 sq. ft)
(Excluding Eaves)
Outbuilding: 17.4 sq. m (187.3 sq. ft)
Balcony: 1.0 sq. m (10.8 sq. ft)

Contact

To arrange a viewing call our office on the number below or visit our website.



Energy Rating: D. We aim to make our particulars both accurate and reliable. However they are not guaranteed; nor do they form part of an offer or contract. If you require clarification on any points then please contact us, especially if you're traveling some distance to view. Please note that appliances and heating systems have not been tested and therefore no warranties can be given as to their good working order.

