



Chertsey Road, TW17  
£695,000

Waterview  


A fantastic, spacious riverside home set overlooking this pretty stretch of The Thames with scope to loft convert (stpp).

Chertsey Road runs parallel to The Thames between Shepperton and Chertsey.





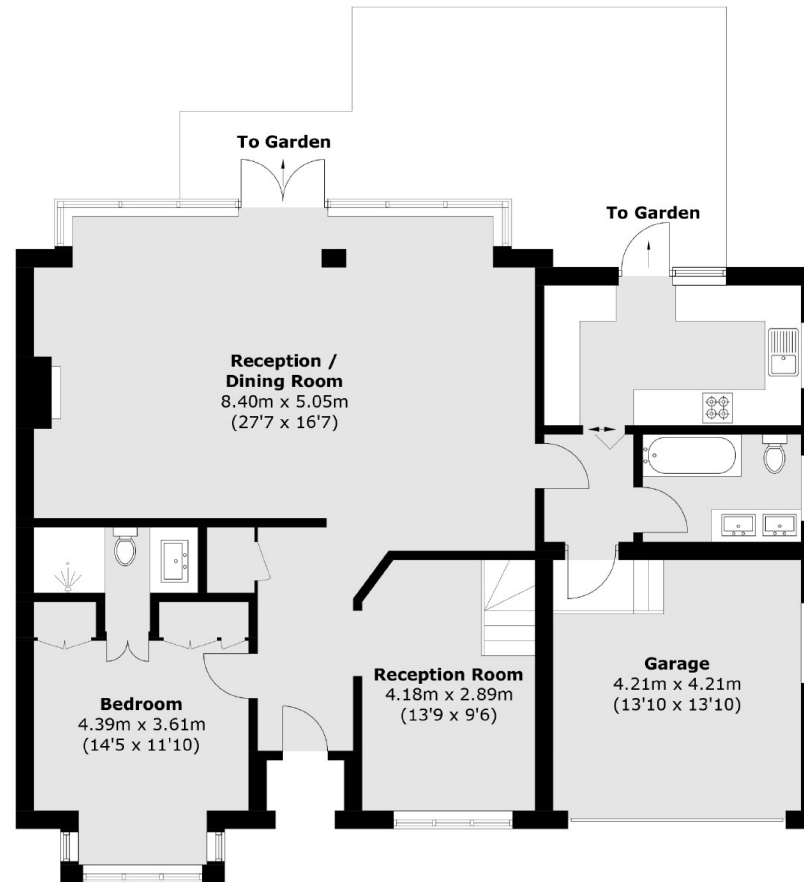
Accommodation is made up of entrance hall, leading to a very spacious double reception room with dining area and living space, all of which overlooks the river. There is a modern kitchen with access to the south facing terrace and stylish family bathroom. The large principal bedroom has full height wardrobes and en-suite shower room. To the front the driveway has parking for several cars and leads to a large garage. To the riverside the raised, decked area faces South and overlooks a pretty lawned garden. There is access to The Towpath and a private 50ft mooring.

### Features

- Riverside Home
- Scope to Convert (stpp)
- Large Living Space
- South Facing
- Garage
- Well Presented



# Chertsey Road, Shepperton, TW17



Total area (approx.): 122.5 sq. m (1,318.6 sq. ft)

## Contact

To arrange a viewing call our office on the number below or visit our website.



Energy Rating: We aim to make our particulars both accurate and reliable. However they are not guaranteed; nor do they form part of an offer or contract. If you require clarification on any points then please contact us, especially if you're traveling some distance to view. Please note that appliances and heating systems have not been tested and therefore no warranties can be given as to their good working order.

