



River Mount, KT12

£1,575,000

Waterview


A charming riverside family home, built in the Arts and Crafts style, set in this elevated position overlooking The Thames at Walton.

River Mount is a private road conveniently located in the heart of Walton.





Accommodation is made up of a bright living room with feature fireplace, oak beamed ceilings and crittall wood framed windows with door to garden terrace. Also on the ground floor is a formal dining room, second reception room, W.C., and a country style kitchen with utility room, walk-in larder and door to side access.

Upstairs the two generous principal bedrooms overlook the river, one with en-suite. There are two further bedrooms and a family bathroom on this floor.

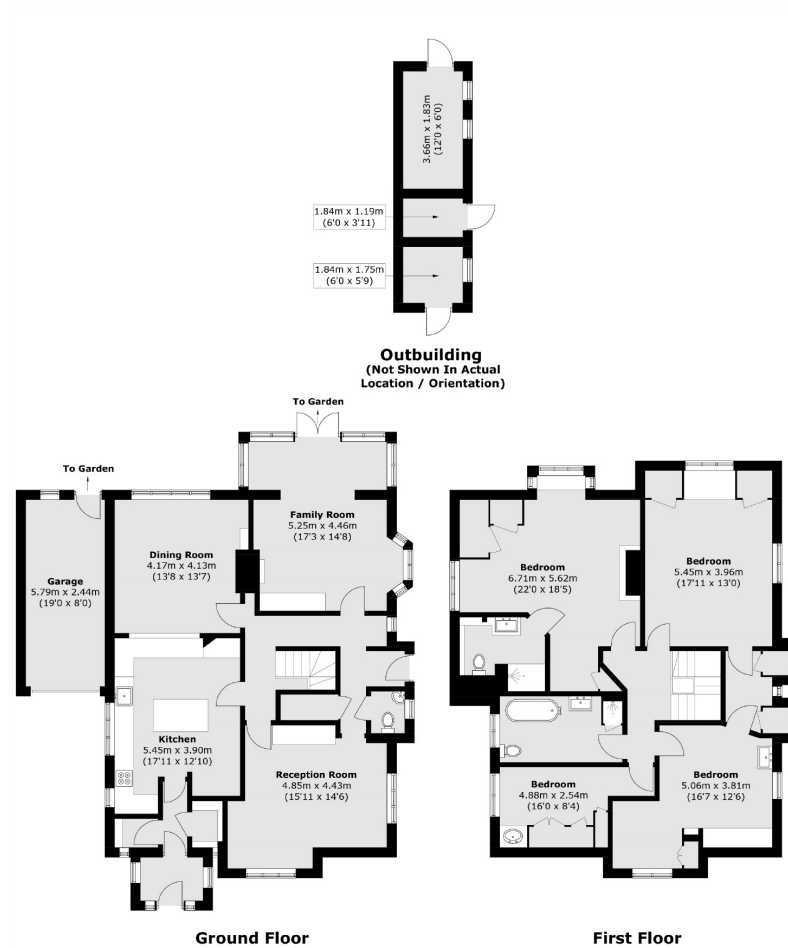
To the front there is an off street parking space leading to the garage. To the rear the terrace has fantastic views across the extensive garden which runs down to the river. There is a large workshop and storage space as well as a summerhouse.

Features

- Riverside Home
- Fantastic Views
- Three Reception Rooms
- Arts & Crafts
- Central Location
- Garage



River Mount, Walton on Thames, KT12



Total area (approx.): 211.8 sq. m (2,279.7 sq. ft)
Outbuilding area (approx.): 13.7 sq. m (147.5 sq. ft)
Garage area (approx.): 14.7 sq. m (158.2 sq. ft)

Contact

To arrange a viewing call our office on the number below or visit our website.



Energy Rating: F. We aim to make our particulars both accurate and reliable. However they are not guaranteed; nor do they form part of an offer or contract. If you require clarification on any points then please contact us, especially if you're traveling some distance to view. Please note that appliances and heating systems have not been tested and therefore no warranties can be given as to their good working order.

