



River Reach, TW11

£2,250 Per calendar month

Dexters



River Reach, TW11

If you're looking for riverside living with uninterrupted views of the Thames, this immaculate two double bedroom apartment has both. There's even a balcony for alfresco dining in the summer months.

Enter into the hallway which leads through to a spacious 25ft reception room. There is plenty of room to relax and dine with a modern wooden floor. There are sliding doors which open up onto a private balcony.

The modern kitchen has sleek cupboards and integrated appliances with plenty of storage and a breakfast bar. There are two generous double bedrooms and in addition there is a modern bathroom and a separate WC.

The private balcony has a view of the River and also looks over the manicured communal gardens which lead to the banks of the River Thames. In a neighbouring block there is a private garage.

Riverside Court is located off Broom Water and River Reach. This location is idyllic and close to transport links, Teddington High Street and Kingston town centre.

Features

- Excellent Decorative Order
- Two Double Bedrooms
- Communal Riverside Gardens
- Balcony With River Views
- Modern Kitchen
- Garage

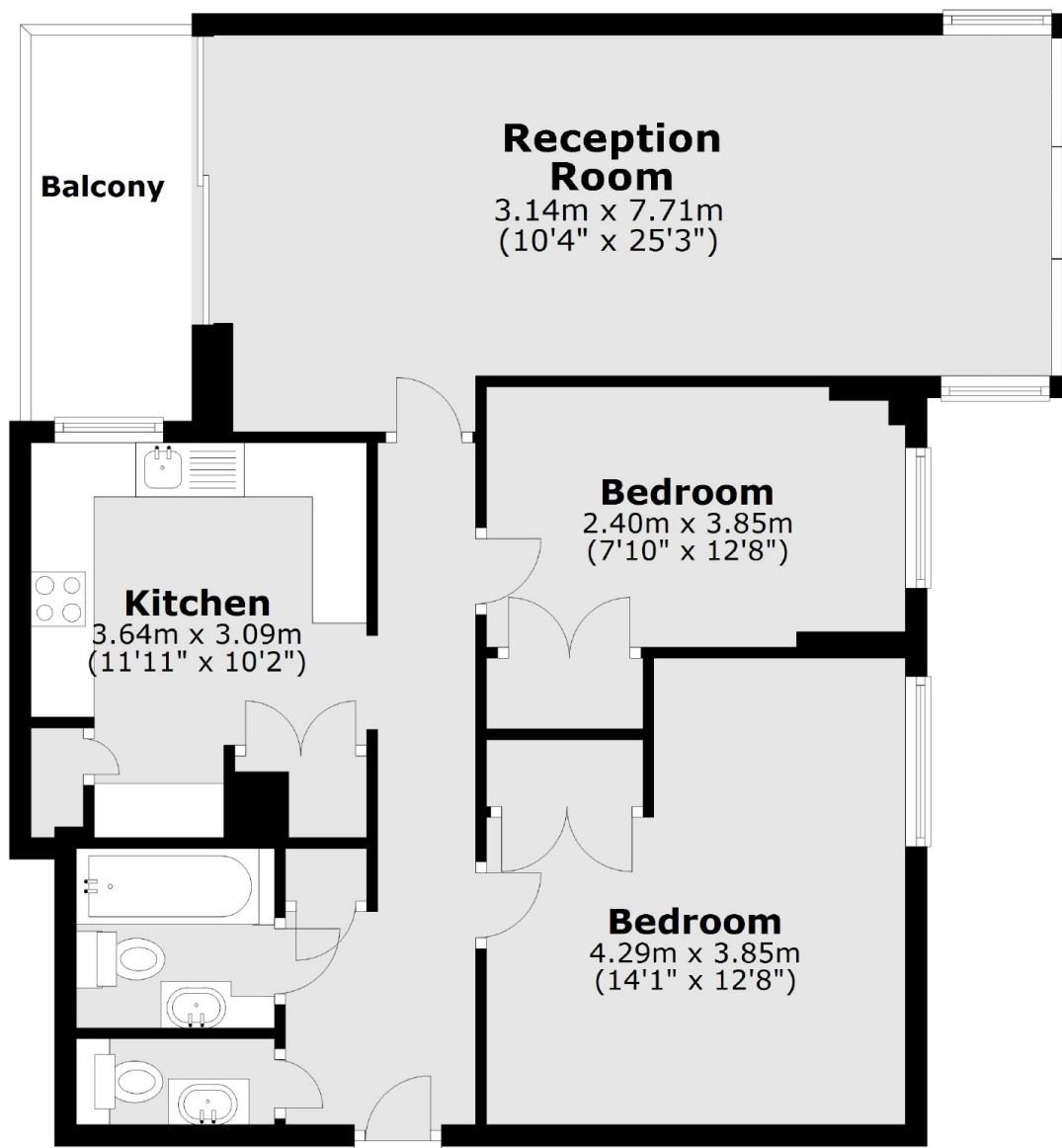






River Reach, Teddington, TW11

Third Floor



Main area: Approx. 77.5 sq. metres (834.1 sq. feet)
Plus balconies, approx. 5.8 sq. metres (62.1 sq. feet)