



Parkgate Road, SW11

£3,461 Per week

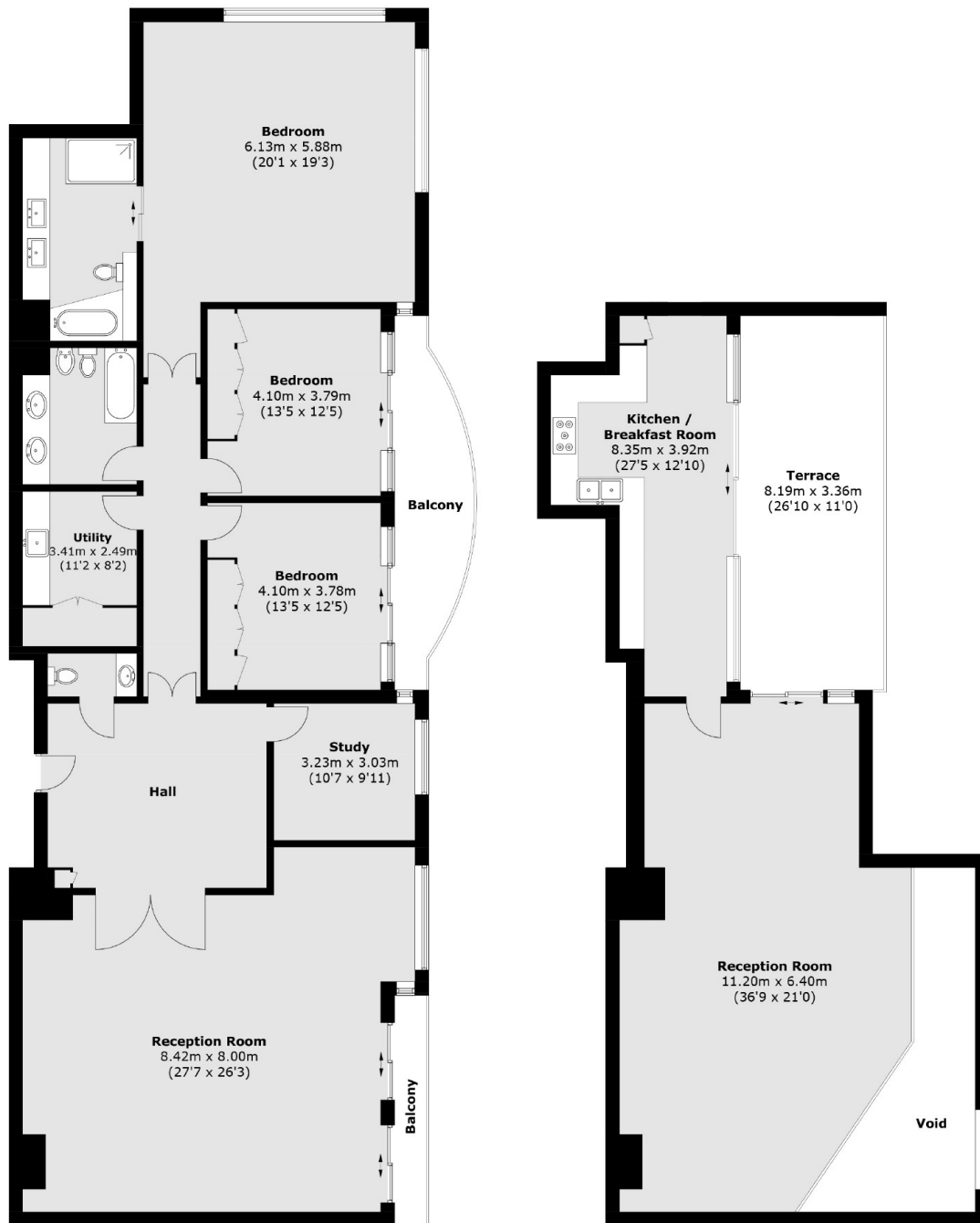
SHORT LET. A stunning four-bedroom duplex penthouse apartment with a private roof terrace in the highly sought-after Bishops Wharf House development.

Bishops Wharf is located less than 0.1 miles from Battersea Park and 0.7 miles from the Kings Road in Chelsea.

Features

- Four Bedrooms
- Bills Included
- Private Parking
- Roof Terrace
- 24hr Concierge
- Available May

Parkgate Road, London, SW11



Sixth Floor

Seventh Floor

Total area (approx.): 289.4 sq. m (3,115.1 sq. ft)
(Excluding Void)

Balcony / Terrace area : 39.9 sq. m (429.5 sq. ft)