



## Lower Mall, W6

£600 Per week

A stunning refurbished large two bedroom, two bathroom apartment with spectacular and uninterrupted direct views of the river and Hammersmith Bridge.

The property is located right next to Hammersmith Bridge, close to Hammersmith tube station.

### Features

- Two Bedrooms
- Two Bathrooms
- Direct River Views
- Close To Tube
- Top Floor
- Refurbished



## Lower Mall, W6

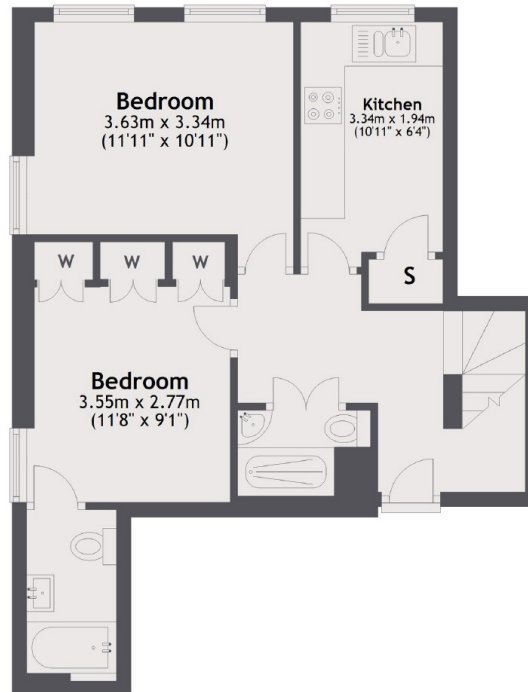
The property is arranged over two floors and has two double bedrooms (one en-suite), family bathroom and separate kitchen.

Upstairs you will find a large, bright reception room with floor to ceiling windows and skylights, where you can enjoy beautiful views over the River Thames.

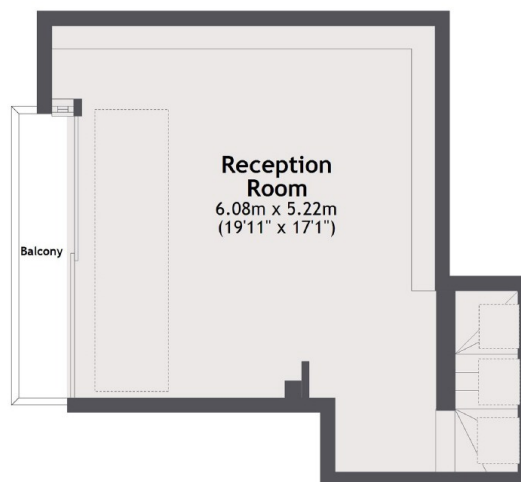


# Lower Mall, London, W6

## Fourth Floor



## Fifth Floor



Total area: approx. 71.6 sq. metres (771.1 sq. feet)