



The Creek, TW16  
£575,000

Waterview  




A charming two/three bedroom timber built riverside bungalow set in this idyllic spot backing onto the river.

The Creek is located off Fordbridge Road in the village of Lower Sunbury-on-Thames.





Accommodation is made up of entrance porch opening onto a 24' reception/dining room through to a spacious living room with high vaulted ceiling. The kitchen overlooks the garden and river beyond with a conservatory/breakfast room. There are two double bedrooms, one with en-suite, a further single bedroom, currently used as a study and a family bathroom. To the front there is a driveway with off street parking. To the rear there is a pretty, south facing garden with a private mooring.

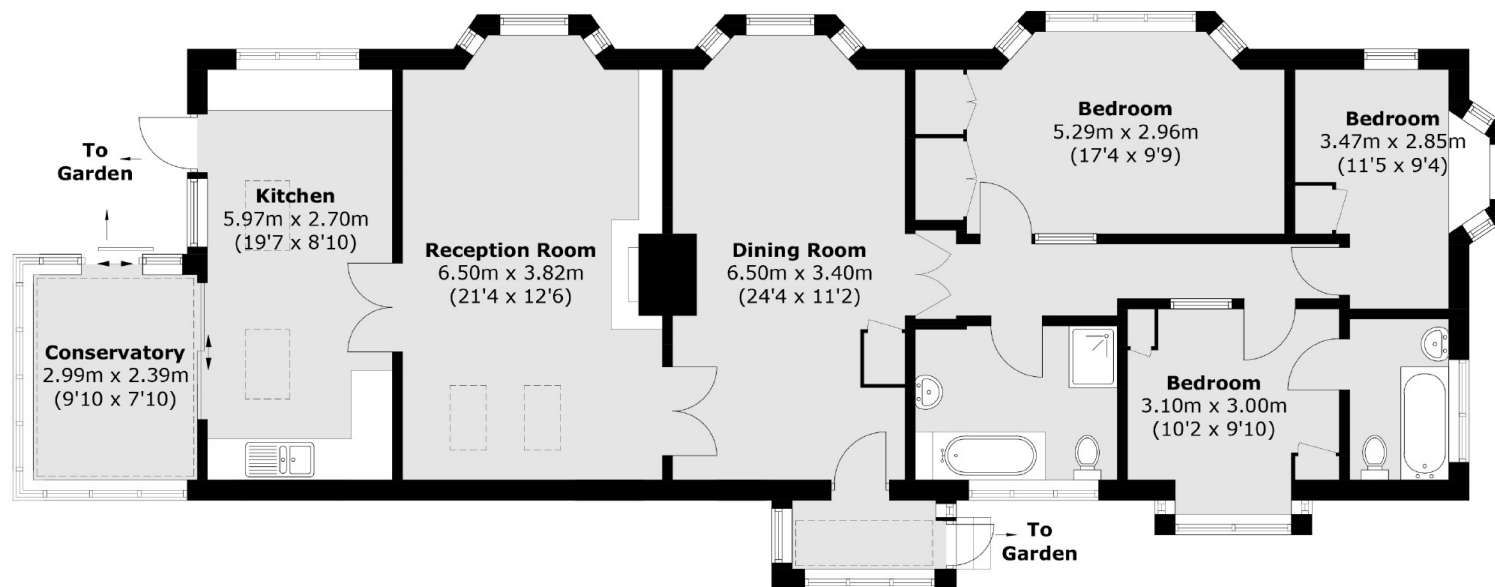
### Features

Riverside Home  
Three Bedroom Bungalow  
Parking  
Scope to Modernise  
South Facing  
Private Mooring





# The Creek, Sunbury-on-Thames, TW16



Total area (approx.): 123.9 sq. m (1,333.6 sq. ft)

## Contact

To arrange a viewing call our office on the number below or visit our website.



Energy Rating: E. We aim to make our particulars both accurate and reliable. However they are not guaranteed; nor do they form part of an offer or contract. If you require clarification on any points then please contact us, especially if you're traveling some distance to view. Please note that appliances and heating systems have not been tested and therefore no warranties can be given as to their good working order.



