



Ferry Lane, TW19  
£999,950

Waterview  




A beautiful, detached family home set in pretty gardens backing onto the Colnebrook with 90ft of frontage.

Ferry Lane is located off Staines Road close to the village of Wraysbury.







Accommodation is made up of entrance hallway, modern integrated kitchen with french doors to juliette balcony overlooking The River. There is a large living room with wood burner and sliding doors to the dining room, with views of the river. There is a large double bedroom with en-suite and a further bedroom/study with river facing juliette balcony on this level. Upstairs there is a spacious double bedroom, a further large single bedroom and family bathroom. To the front the gated driveway has space for several cars and leads to a double garage. There is a large, enclosed lawned garden to the front and the rear garden borders 90ft of The Colnebrook with lovely views and a riverside entertaining area.

## Features

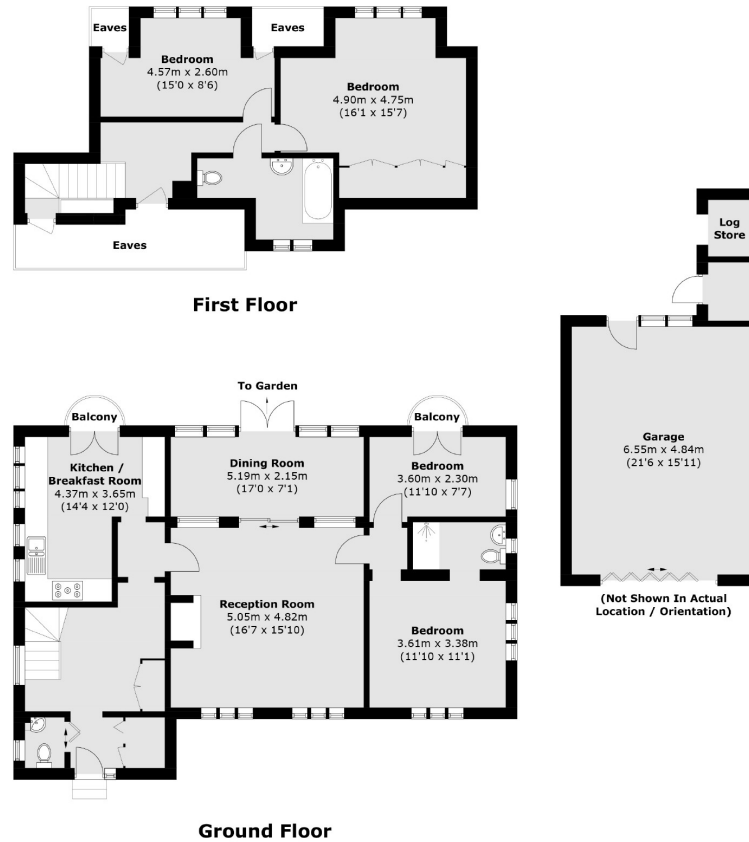
Family Home  
Detached  
Pretty Gardens  
90ft Frontage  
River Views  
Double Garage







# Ferry Lane, Wraysbury, TW19



Total area (approx.): 144.2 sq. m (1,552.1 sq. ft)  
(Excluding Eaves)  
Garage / Stores: 36.3 sq. m (390.7 sq. ft)  
Balcony: 1.8 sq. m (19.4 sq. ft)

## Contact

To arrange a viewing call our office on the number below or visit our website.



Energy Rating: We aim to make our particulars both accurate and reliable. However they are not guaranteed; nor do they form part of an offer or contract. If you require clarification on any points then please contact us, especially if you're traveling some distance to view. Please note that appliances and heating systems have not been tested and therefore no warranties can be given as to their good working order.



