



Park Avenue, TW19

£785,000

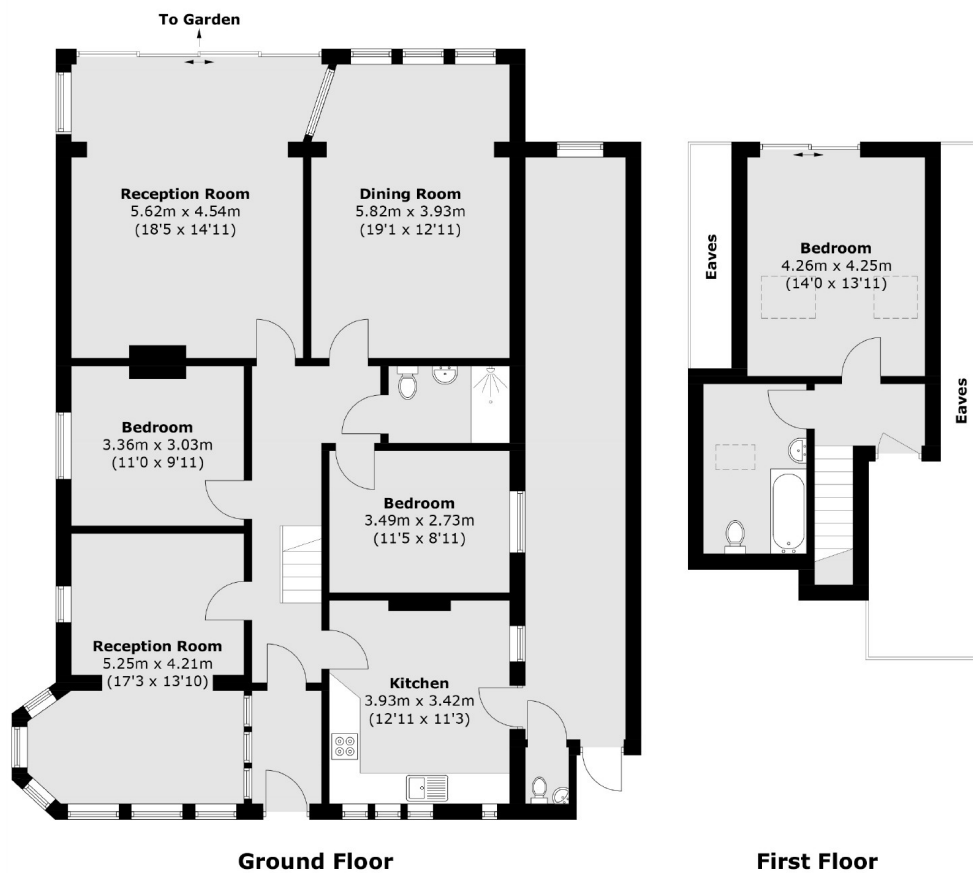
A rarely available riverside property with planning permission granted to rebuild your dream home. The permission granted is to create a brand new build totalling over 3100sqft with 45ft of private River Thames mooring.

Park Avenue is a premier road in the village of Wraysbury located within a short walk of Sunnymeads station with direct links to London.

Features

- Rarely Available Plot
- 45ft River Thames Mooring
- Large Scope
- River Views
- Planning Permission Granted
- Large Plot

Park Avenue, Staines-Upon-Thames, TW19



Total area (approx.): 178.5 sq. m (1,921.3 sq. ft)
(Including Lean To / Excluding Eaves)

Contact

To arrange a viewing call our office on the number below or visit our website.



Energy Rating: E. We aim to make our particulars both accurate and reliable. However they are not guaranteed; nor do they form part of an offer or contract. If you require clarification on any points then please contact us, especially if you're traveling some distance to view. Please note that appliances and heating systems have not been tested and therefore no warranties can be given as to their good working order.