



Portsmouth Road, KT6

£675,000

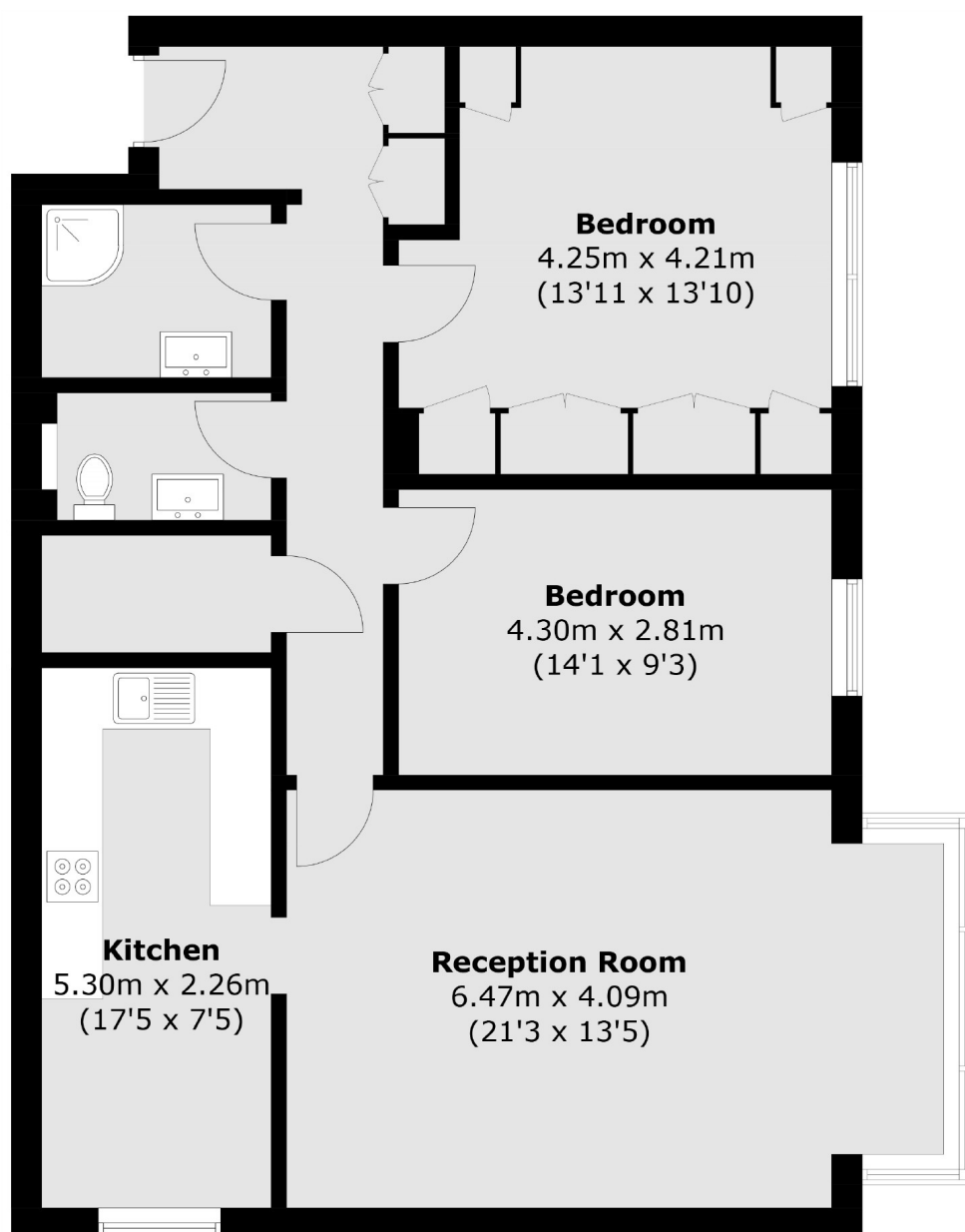
A fantastic bright and spacious two double bedroom ground floor apartment next to the River Thames in Surbiton.

Portsmouth Road runs parallel to the River Thames between Surbiton and Kingston.

Features

- Ground Floor Apartment
- Two Double Bedrooms
- Modern Kitchen
- Underground Parking
- River Thames
- Large Reception Room

Portsmouth Road,
Surbiton, KT6



Total area (approx.): 90.0 sq. m (968.8 sq. ft)

Contact

To arrange a viewing call our office on the number below or visit our website.



Energy Rating: C. We aim to make our particulars both accurate and reliable. However they are not guaranteed; nor do they form part of an offer or contract. If you require clarification on any points then please contact us, especially if you're traveling some distance to view. Please note that appliances and heating systems have not been tested and therefore no warranties can be given as to their good working order.