



Queens Reach, KT8

£735,000

Waterview



A beautiful and spacious apartment set in this exclusive gated development with views of The River Mole.

Queens Reach is located in the heart of East Molesey village, a stone's throw from the cafes and antique shops of Bridge Street, Hampton Court Palace and train station.





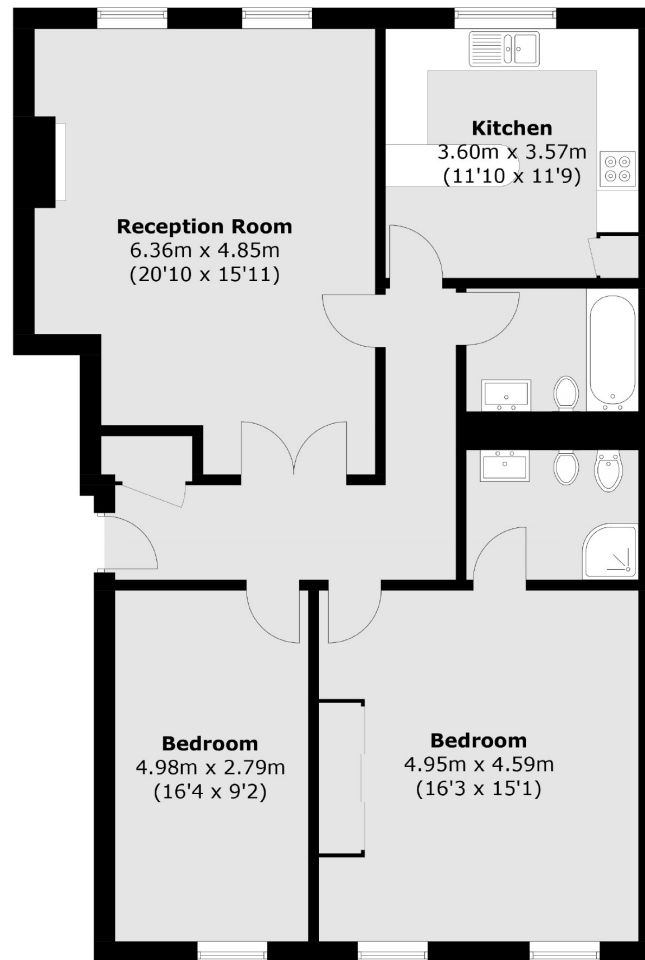
Accommodation is made up of entrance hallway, 20' double reception room with space for dining and modern kitchen breakfast room with breakfast bar. The large principal bedroom has a range of built-in wardrobes, there is a second double bedroom and two stylish modern bathrooms. The apartment is offered with no onward chain, and the development has beautifully maintained communal gardens which border The Mole. Allocated parking space is included.

Features

Beautiful Apartment
Measures 1,100 sq ft
No Chain
Two Double Bedrooms
Two Bathrooms
River Views



Queens Reach, East Molesey, KT8



Total area (approx.): 102.4 sq. m (1,102.2 sq. ft)

Contact

To arrange a viewing call our office on the number below or visit our website.



Energy Rating: C. We aim to make our particulars both accurate and reliable. However they are not guaranteed; nor do they form part of an offer or contract. If you require clarification on any points then please contact us, especially if you're traveling some distance to view. Please note that appliances and heating systems have not been tested and therefore no warranties can be given as to their good working order.

