



## Laleham Reach, KT16

£375,000

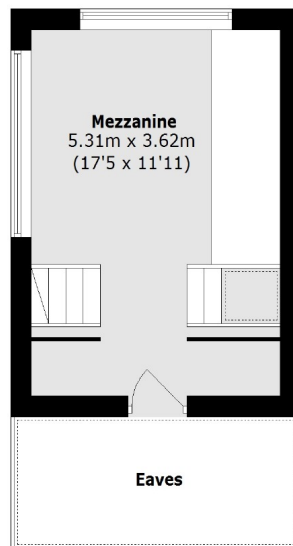
A rare opportunity to purchase this residential plot set on this picturesque part of The Thames. The current timber built home is in need of either complete refurbishment or replacement.

Northern Burway runs parallel to The Thames and is located at the top of Laleham Reach between Staines and Laleham Village.

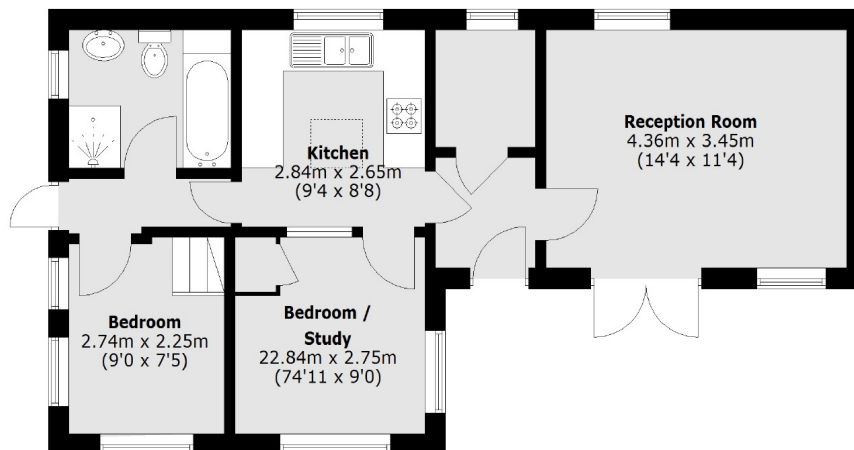
### Features

- Great Opportunity
- Residential Plot
- Timber House
- Private Mooring
- Resident's Parking
- No Chain

## Laleham Reach, Chertsey, KT16



**Mezzanine**



**First Floor**

Total area (approx.): 70.8 sq. m (762.0 Sq. ft)  
(Including Mezzanine)  
(Excluding Eaves)

### Contact

To arrange a viewing call our office on the number below or visit our website.



Energy Rating: G. We aim to make our particulars both accurate and reliable. However they are not guaranteed; nor do they form part of an offer or contract. If you require clarification on any points then please contact us, especially if you're traveling some distance to view. Please note that appliances and heating systems have not been tested and therefore no warranties can be given as to their good working order.