



Hamhaugh Island, TW17
£1,025,000

Waterview


A fantastic opportunity to purchase this substantial riverside home on the largest plot of this sought after island with breathtaking view of The Thames and over 130ft of river frontage.

Hamhaugh Island is an idyllic private island with pedestrian access via Shepperton Lock.





Accommodation is made up of an impressive entrance hall with vaulted ceiling, a huge double reception room with solid wood flooring and sliding doors to fantastic view of the river.

There is a large integrated kitchen with breakfast eating area. The three double bedrooms are all of a generous size, two have en-suite and there is a large family bathroom with sauna.

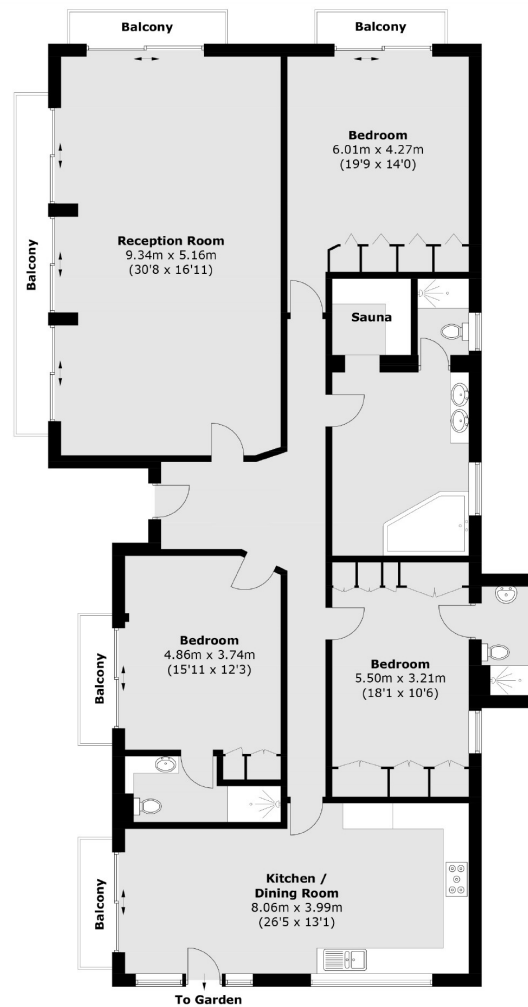
The house is situated on a large plot with 130ft of river frontage and is offered with vacant possession and no onward chain.

Features

Substantial Home
Large Plot
130' River Frontage
Scope to Modernise
Private Island
Fantastic Views



Hamhaugh Island, Shepperton, TW17



Total area (approx.): 191.5 sq. m (2061.3 sq. ft)
Balcony: 15.4 sq. m (165.8 sq. ft)

Contact

To arrange a viewing call our office on the number below or visit our website.



Energy Rating: C. We aim to make our particulars both accurate and reliable. However they are not guaranteed; nor do they form part of an offer or contract. If you require clarification on any points then please contact us, especially if you're travelling some distance to view. Please note that appliances and heating systems have not been tested and therefore no warranties can be given as to their good working order.

