



Laleham Reach, KT16

£625,000

Waterview



A charming, three bedroom timber riverside home on The Thames with a 30' private mooring.

Laleham Reach is a private riverside road running parallel to The Thames located off Chertsey Lane.





Accommodation is made up of an impressive open plan living/dining area with kitchen and double height vaulted ceilings. There are two double bedrooms on this level, one with en-suite and a further family bathroom. Stairs lead to an upper mezzanine level which overlooks the lower living space with views of the river and a third bedroom with en-suite.

To the front there is a large driveway with parking for several cars and a large double garage.

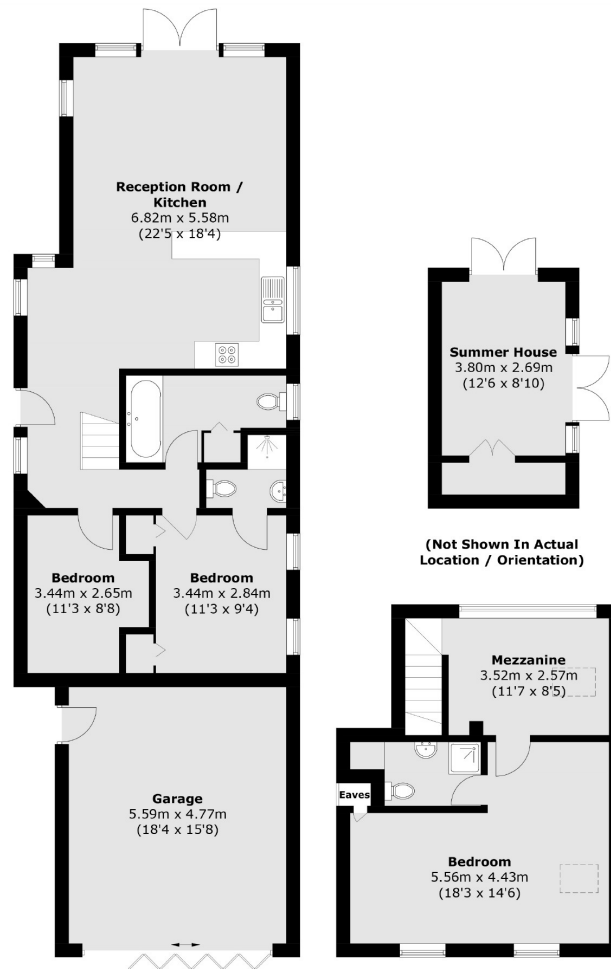
A large rear garden leads down to the riverside with fantastic views, private mooring and summer house.

Features

Riverside Home
Three Bedrooms
Two Bathrooms
Double Garage
30' Mooring
No Chain



Laleham Reach, Chertsey, KT16



Ground Floor

First Floor

Total area (approx.): 108.0 sq. m (1,162.4 sq. ft)
(Excluding Eaves)
Garage / Summer House: 40.3 sq. m (433.8 sq. ft)

Contact

To arrange a viewing call our office on the number below or visit our website.



Energy Rating: We aim to make our particulars both accurate and reliable. However they are not guaranteed; nor do they form part of an offer or contract. If you require clarification on any points then please contact us, especially if you're traveling some distance to view. Please note that appliances and heating systems have not been tested and therefore no warranties can be given as to their good working order.

