



Temple Lane, SL7
£2,250,000

Waterview


Offers in excess of - A beautiful riverside family home, built in the early 1700s, set in the picturesque hamlet of Temple. The house boasts five bedrooms, four reception rooms, a full width river facing balcony and 76ft mooring.

Temple is situated within 2 miles of Marlow, with it's selection of shops, bars and restaurants.





Accommodation is made up of entrance hallway, principal drawing room with french doors to garden and river views, dining room, living room with spiral staircase to study/bedroom five, utility room, rear hall and conservatory overlooking the river.

On the first floor the the principal bedroom has a four piece en-suite, with two further double bedrooms and family bathroom. There is a full width river facing balcony on this level. On the top floor bedroom four is accessed from the attic room and a further shower-room.

The landscaped front garden has a feature fountain and flagstone path to front door.

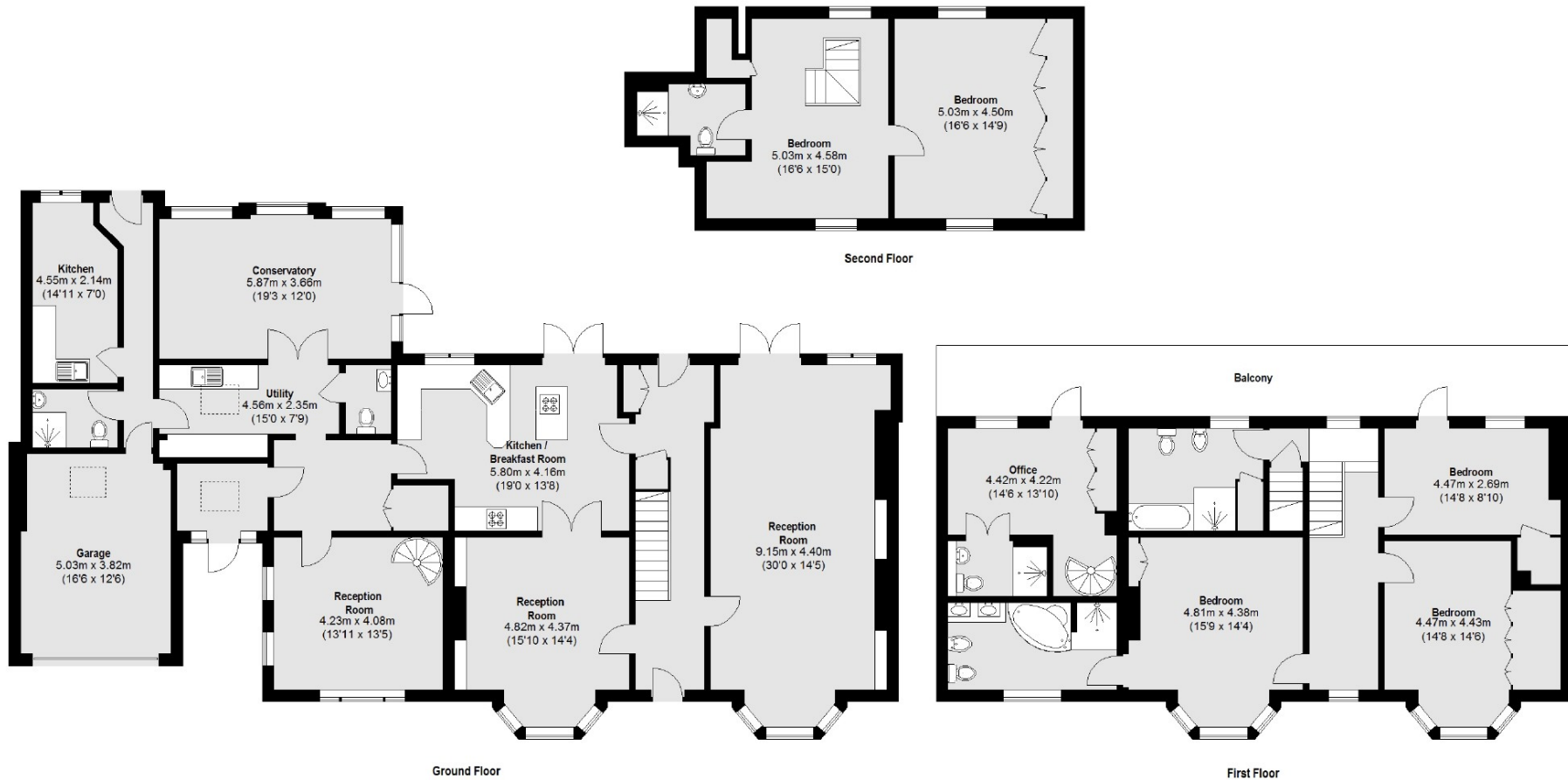
The gravelled driveway leads to a large garage and further rear store room. The rear riverside garden has steps to a 76ft mooring on The Thames.

Features

Beautiful Period Home
Five Bedrooms
River Views
Picturesque Location
76ft Mooring
No Chain



Temple Lane, Marlow, SL7



Total area (approx.): 359.97 sq. m (3875 Sq. ft)
 (Including Garage)
 Balcony: 28.89 sq. m (311 Sq. ft)

Contact

To arrange a viewing call our office on the number below or visit our website.



Energy Rating: F. We aim to make our particulars both accurate and reliable. However they are not guaranteed; nor do they form part of an offer or contract. If you require clarification on any points then please contact us, especially if you're traveling some distance to view. Please note that appliances and heating systems have not been tested and therefore no warranties can be given as to their good working order.

