



River Ash Estate, TW17
£875,000

Waterview


A wonderful home on the river with fantastic far reaching views and a 50ft private mooring.

River Ash Estate runs parallel to The Thames in Lower Sunbury at the bottom of Felix Lane.





On the ground floor there is a country style kitchen breakfast room, separate utility room, spacious living room with doors to a full width river facing reception room with doors to deck. There is a large study/ bedroom and a four piece family bathroom on this level.

On the first floor there is a large principal bedroom with river facing balcony, shower room and further double bedroom. To the front there is off street parking for several cars and a large double garage with workshop, shower room and an upper level storeroom.

To the riverside the pretty garden has a patio/eating area with gazebo, and lawn which backs onto the 50ft private mooring.

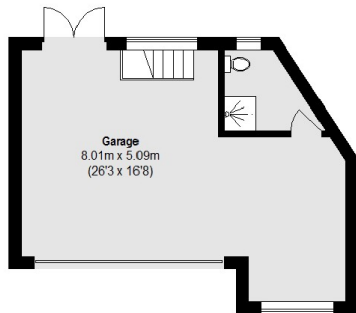
Offered with no onward chain.

Features

River Home
Great Views
50ft Mooring
Double Garage
Modern Build
No Chain

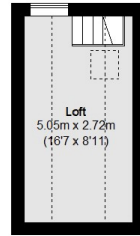


River Ash Estate, Shepperton, TW17

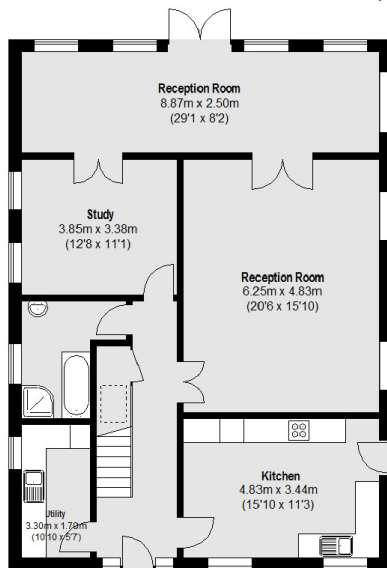


Outbuilding Ground Floor

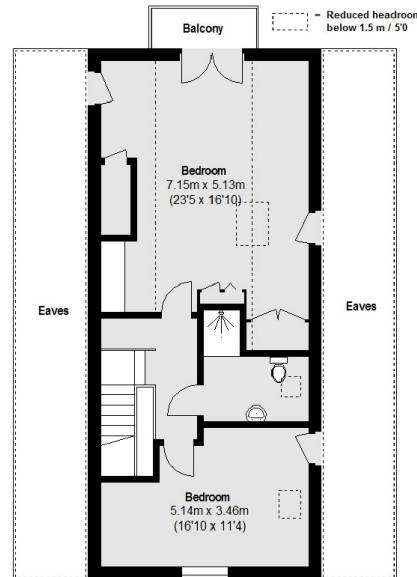
(Not Shown In Actual
Location / Orientation)



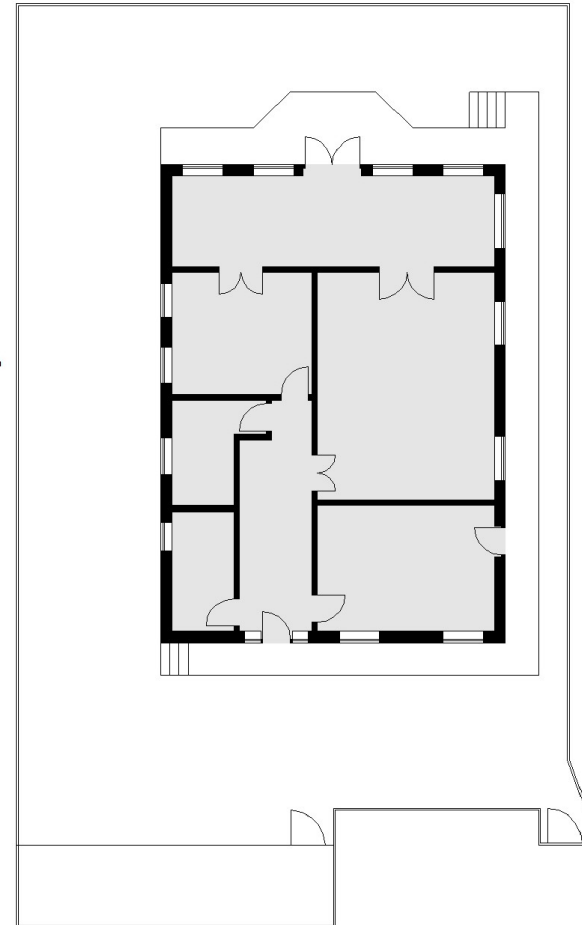
First Floor



Ground Floor



First Floor



Site Plan

Total area (approx.): 175.98 sq. m (1894 sq. ft) (Excluding Eaves)
Outbuildings: 55.52 sq. m (598 sq. ft)
Balcony: 2.60 sq. m (28 sq. ft)

Contact

To arrange a viewing call our office on the number below or visit our website.



Energy Rating: D. We aim to make our particulars both accurate and reliable. However they are not guaranteed; nor do they form part of an offer or contract. If you require clarification on any points then please contact us, especially if you're traveling some distance to view. Please note that appliances and heating systems have not been tested and therefore no warranties can be given as to their good working order.

