



## Central Avenue, SW6

£675,000

A spacious and modern one bedroom apartment in a sought-after complex on the banks of the River Thames. The development also has a 24 hour concierge and a gym.

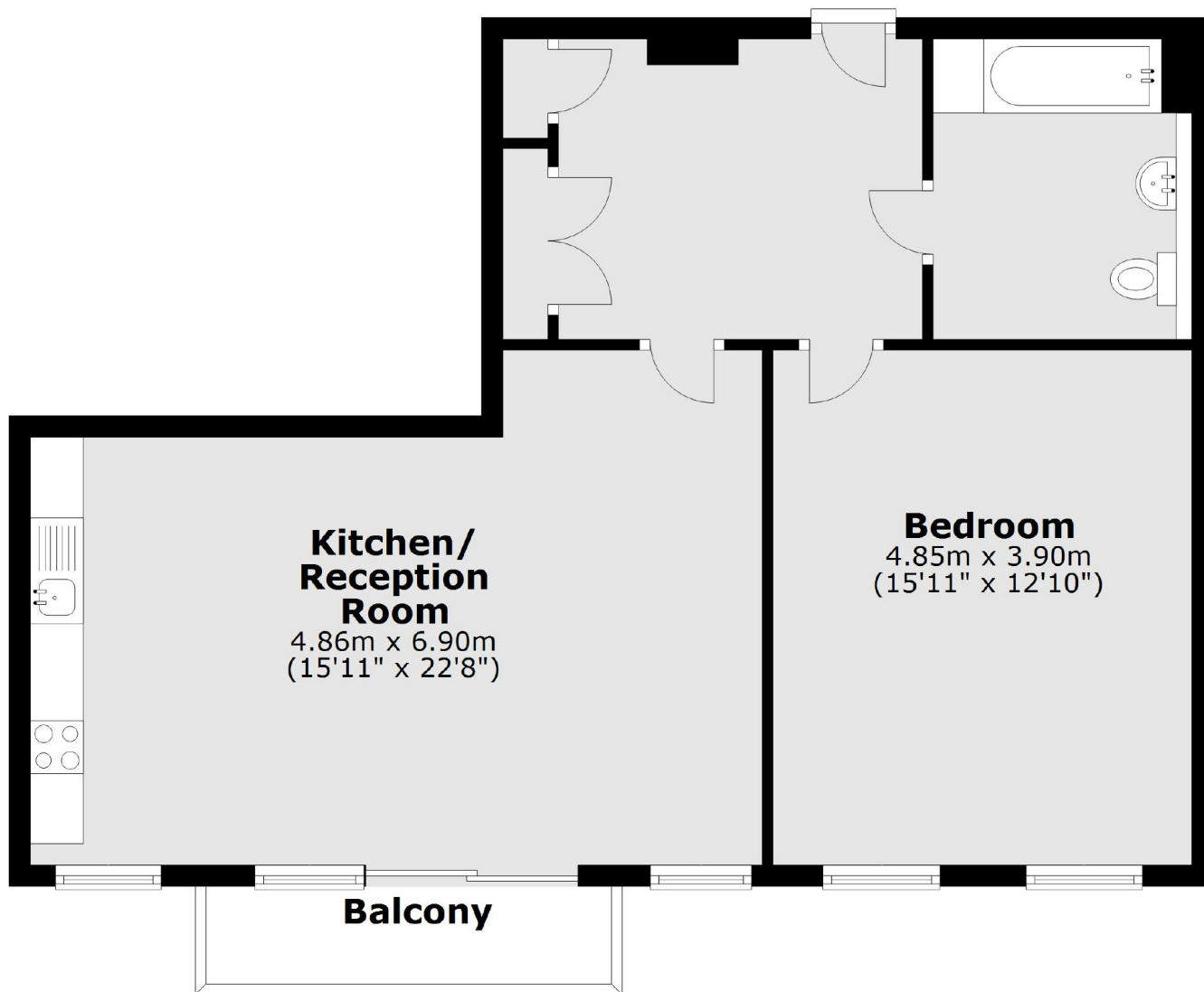
Fulham Riverside is ideally located for the amenities of Sands End including a large supermarket as well as the proposed cafes within the development itself. Hurlingham Park and South Park are also close by.

### Features

- Riverside Development
- 24 Hour Concierge
- Gym
- Modern Apartment
- Fully Integrated Kitchen
- Balcony

# Central Avenue, London, SW6

## Fifth Floor



Total area: approx. 68.3 sq. metres (735.2 sq. feet)