



Lower Ham Road, KT2

£399,950

A ground floor riverside purpose built apartment offering 570 sq ft of lateral space. The property enjoys panoramic views over the communal gardens, Canbury Gardens and across the River Thames and is offered with immediate vacant possession and no forward chain.

Canbury Court, Lower Ham Road is enviably located on the banks of the River Thames and is conveniently located for Canbury Gardens, Ham Lands and is positioned equidistant between Richmond Park and Kingston Town Centre. Families are well catered for with Fern Hill Primary and The Kingston Academy schools, both Ofsted rated Outstanding, situated close by.

Features

- Two Bedrooms
- Reception Room
- Kitchen
- Bathroom
- Communal Gardens
- Garage In Nearby Block



Lower Ham Road, KT2

The property is entered via a communal entrance hall.

The ground floor accommodation consists of an entrance hall with built-in storage cupboards, a bay fronted reception room which enjoys panoramic views over the communal gardens, Canbury Gardens and across the River Thames, a fitted kitchen, a master double bedroom which enjoys panoramic views over the communal gardens, Canbury Gardens and across the River Thames, a large single bedroom and a bathroom.

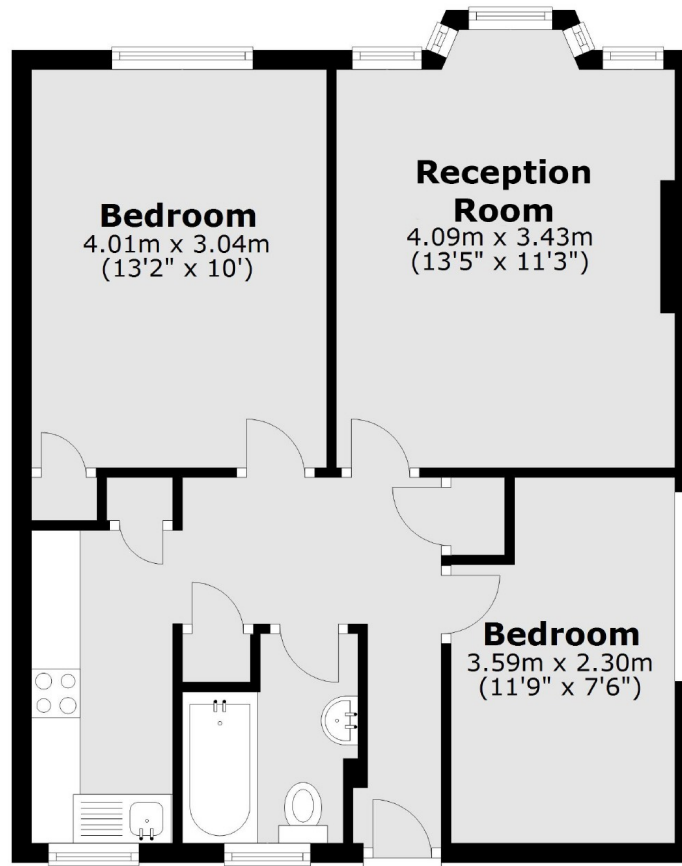
The property offers the potential for a buyer to make cosmetic improvements to create a spectacular home and benefits from uPVC double glazing throughout.

Outside to the front are well maintained communal gardens which enjoy views over Canbury Gardens and across the River Thames and are mostly laid to lawn with established flower and shrub displays. To the rear is a single garage accessed via Bank Lane.



Lower Ham Road, Kingston Upon Thames, KT2

Ground Floor



Total area: approx. 53.0 sq. metres (570.1 sq. feet)