



## Blacksmiths Lane, TW18

£650,000

A beautiful detached three bedroom cottage full of character, with a fantastic roof terrace garden, located a stones throw away from the River Thames.

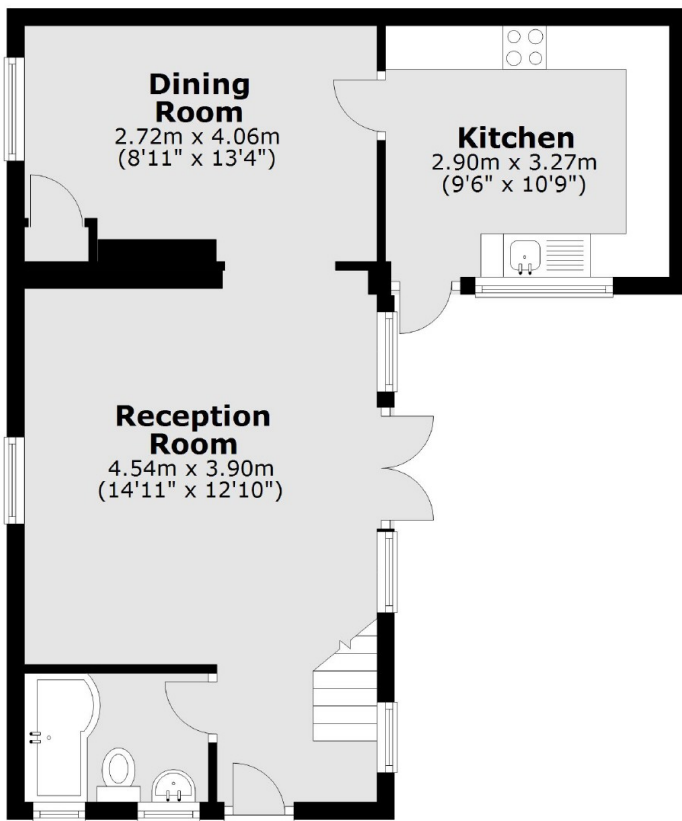
Blacksmiths Lane is located off Shepperton Road set moments away from the River Thames and Towpath.

### Features

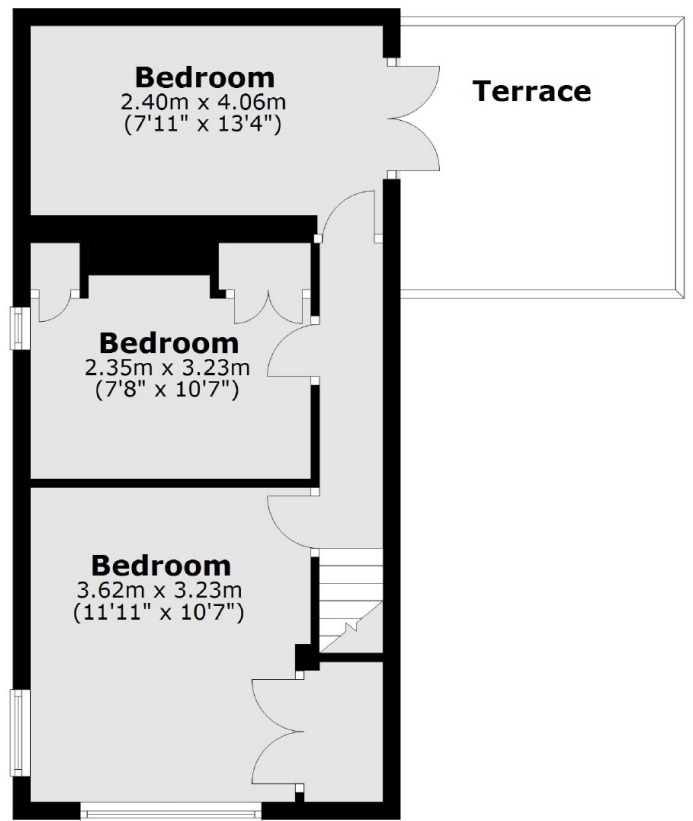
Charming Cottage  
Three Bedrooms  
Detached  
No Chain  
Roof Terrace Garden  
Moments From River Thames

## Blacksmiths Lane, Staines-Upon-Thames, TW18

### Ground Floor



### First Floor



Total area: approx. 81.4 sq. metres (876.3 sq. feet)

### Contact

To arrange a viewing call our office on the number below or visit our website.



Energy Rating: E. We aim to make our particulars both accurate and reliable. However they are not guaranteed; nor do they form part of an offer or contract. If you require clarification on any points then please contact us, especially if you're traveling some distance to view. Please note that appliances and heating systems have not been tested and therefore no warranties can be given as to their good working order.