



Hamhaugh Island, TW17

£699,950

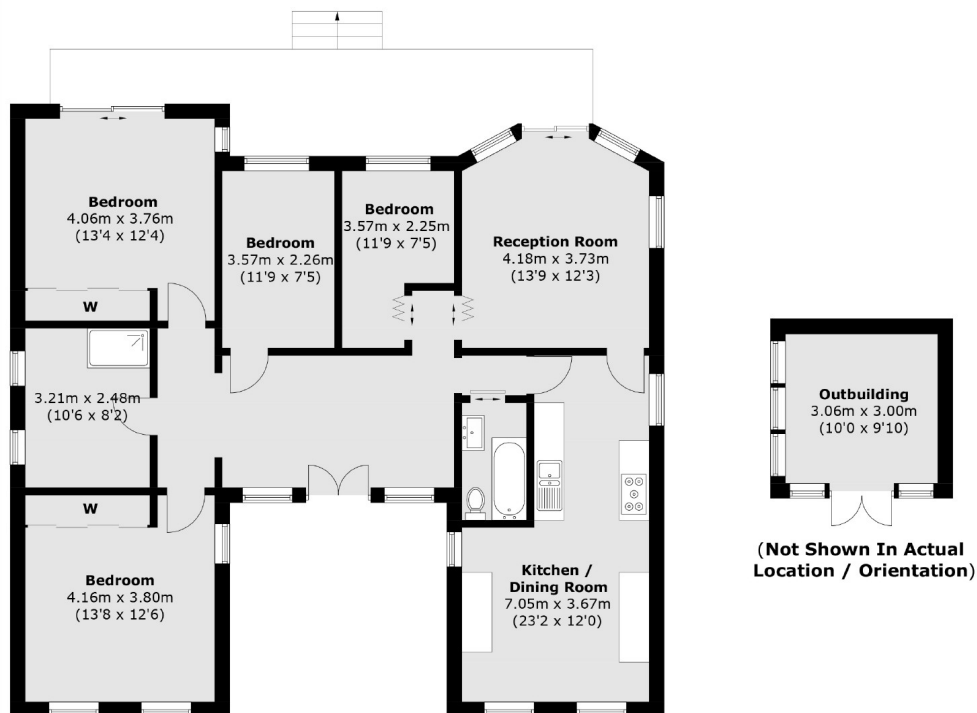
A charming riverside home set within pretty gardens on a large plot of this private pedestrian access island in Shepperton. The house is a partially completed project and has scope to finish/develop into a beautiful home.

Hamhaugh Island is located just off The Towpath at Shepperton and accessed via the lock.

Features

- Charming Home
- Large Plot
- Pretty Gardens
- Scope to Develop
- Private Parking
- 50' Mooring

Hamhaugh Island, Shepperton, TW17



Total area (approx.): 118.2 sq. m (1,272.3 sq. ft)
Outbuilding: 9.3 sq. m (100.1 sq. ft)
External Area: 19.6 sq. m (210.9 sq. ft)

Contact

To arrange a viewing call our office on the number below or visit our website.



Energy Rating: D. We aim to make our particulars both accurate and reliable. However they are not guaranteed; nor do they form part of an offer or contract. If you require clarification on any points then please contact us, especially if you're traveling some distance to view. Please note that appliances and heating systems have not been tested and therefore no warranties can be given as to their good working order.