

FLETCHERS

ESTATE AGENTS



Esmond Road, W4

£2,541 Per week (£11000 pcm)

A beautifully designed five bedroom house located in the heart of Bedford Park. The property comprises of a double reception with fireplace and large eat-in modern kitchen leading out on to a landscaped garden.

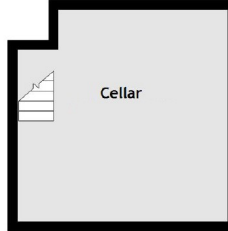
Esmond Road is convenient for all the amenities of Chiswick High Road and the nearest station is Turnham Green underground.

- Five Bedrooms • Through Reception • Storage Throughout • Newly refurbished • Modern Kitchens • Modern bathrooms •

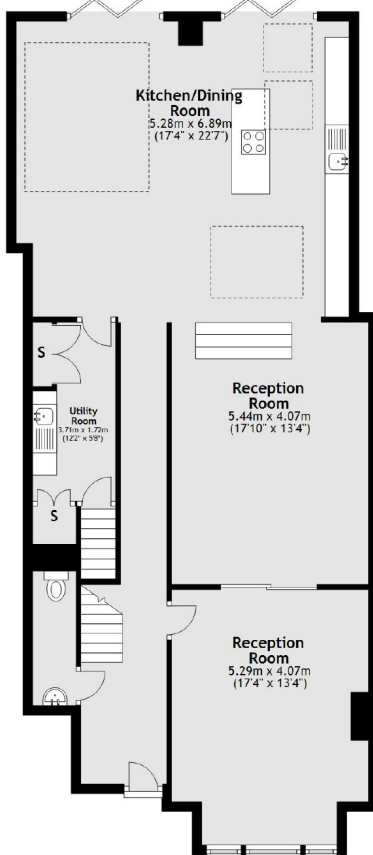
FLETCHERS

ESTATE AGENTS

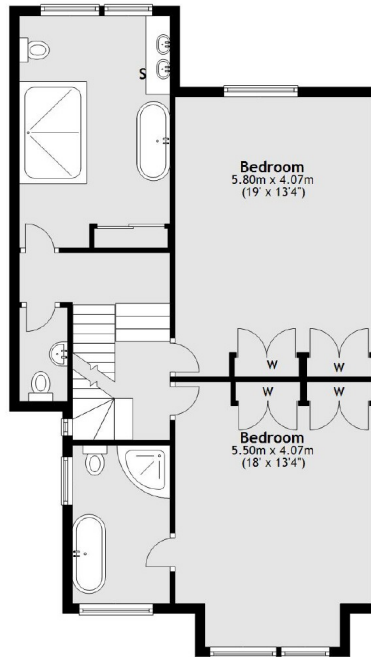
Basement
Approx. 18.3 sq. metres (197.5 sq. feet)



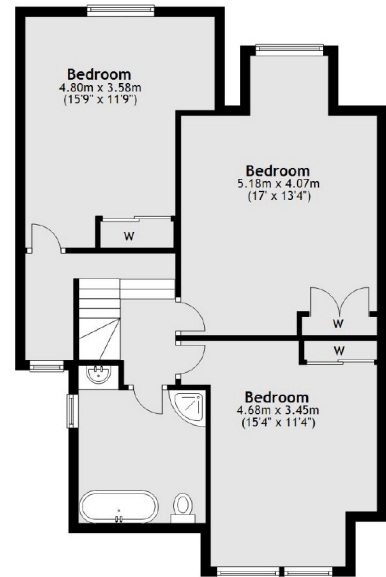
Ground Floor
Approx. 111.3 sq. metres (1197.6 sq. feet)



First Floor
Approx. 79.7 sq. metres (857.9 sq. feet)



Second Floor
Approx. 69.6 sq. metres (749.4 sq. feet)



Total area: approx. 278.9 sq. metres (3002.4 sq. feet)

Fletchers Chiswick High Road Lettings
86 Chiswick High Road, Chiswick, London, W4 1SY
020 8742 4100
chiswicklettings@fletcherestates.com

Energy Rating: . We aim to make our particulars both accurate and reliable. However they are not guaranteed; nor do they form part of an offer or contract. If you require clarification on any points then please contact us, especially if you're traveling some distance to view. Please note that appliances and heating systems have not been tested and therefore no warranties can be given as to their good working order.