

FLETCHERS

ESTATE AGENTS



Netheravon Road, W4

£450 Per week

Set on one of Chiswicks most prestigious roads, a one bedroom ground floor flat with a private West facing terrace. There is an open plan kitchen/reception room and to the rear of the property steps down to a spacious basement with huge potential to be converted into useable space.



Set on one of Chiswicks most prestigious roads, a one bedroom ground floor flat with a private West facing terrace. There is an open plan kitchen/reception room, and to the rear of the property steps down to a spacious basement with huge potential to be converted into useable space

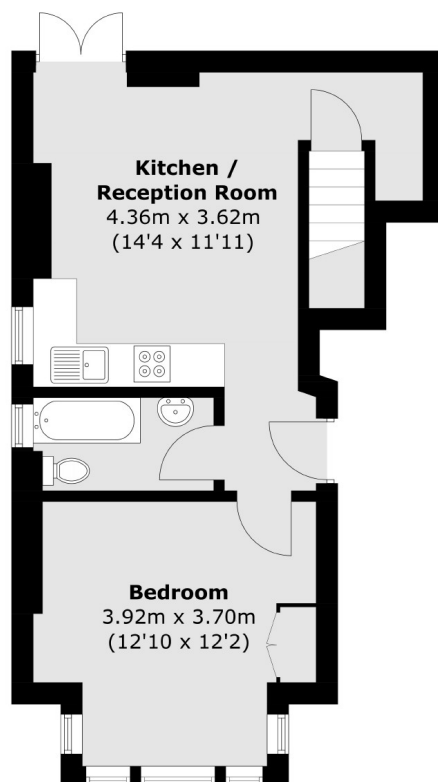
Netheravon Road is superbly located. Just off Chiswick High Road with a fantastic array of shops, restaurants and cafes all available on the doorstep. To the south, the Thames is a short walk. Turnham Green and Stamford Brook offer underground lines.

- One bedroom • Modern bathroom • Open plan kitchen •
- Private garden • Furnished • Central Chiswick •

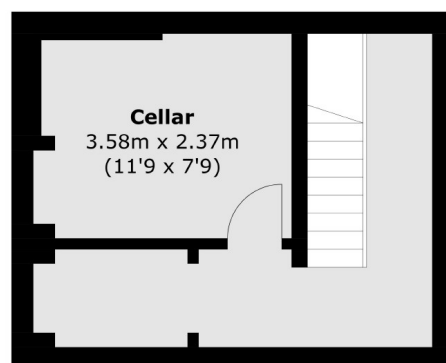


FLETCHERS

ESTATE AGENTS



Ground Floor



Basement

Total area (approx.): 63.8 sq. m (686.7 sq. ft)
(Including Basement)

Fletchers Chiswick High Road Lettings
86 Chiswick High Road
Chiswick
London
W4 1SY
020 8742 4100

Energy Rating: F We aim to make our particulars both accurate and reliable. However they are not guaranteed; nor do they form part of an offer or contract. If you require clarification on any points then please contact us, especially if you're traveling some distance to view. Please note that appliances and heating systems have not been tested and therefore no warranties can be given as to their good working order