

FLETCHERS

ESTATE AGENTS



Upham Park Road, W4

£576 Per week (£2,500 pcm)

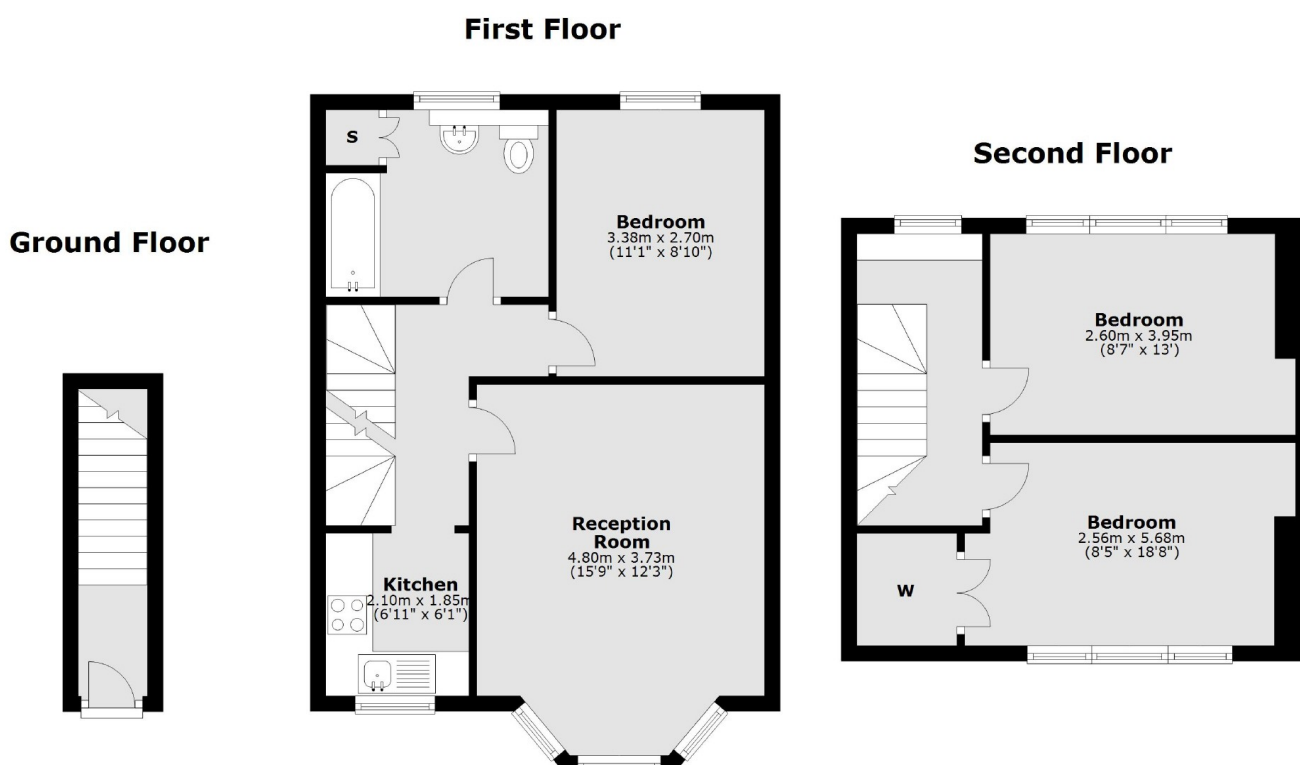
A well presented split-level, three double bedroom flat with a large reception room, a modern kitchen and a bathroom.

Upham Park Road is a quiet sought after tree lined residential cul-de-sac, allowing easy access to the popular restaurants, cafés and shops along Chiswick High Road with Turnham Green Station within a quarter of a mile away.

- Three Bedrooms • Split-Level • Central Chiswick • Period Features • Large Reception • Excellent Transport Links •

FLETCHERS

ESTATE AGENTS



Total area: approx. 78.4 sq. metres (844.0 sq. feet)

Fletchers Chiswick High Road Lettings
86 Chiswick High Road, Chiswick, London, W4 1SY
020 8742 4100
chiswicklettings@fletcherstates.com

Energy Rating: E. We aim to make our particulars both accurate and reliable. However they are not guaranteed; nor do they form part of an offer or contract. If you require clarification on any points then please contact us, especially if you're traveling some distance to view. Please note that appliances and heating systems have not been tested and therefore no warranties can be given as to their good working order.