



Park Road, W4

£1,501 Per week (£6500 pcm)

A four bedroom detached family house in the heart of Grove Park measuring in excess of 2,200 sq ft, this impressive house offers a large modern kitchen with ample space for dining and direct access to a large private garden, double reception room, four double bedrooms, three bathrooms and off-street parking for three cars.

Park Road is minutes from the famous Chiswick House and Grounds as well as Chiswick Mainline Station. For the motorist, links to A4/M4/A316(M3) are very close providing easy access to Heathrow and Central London.



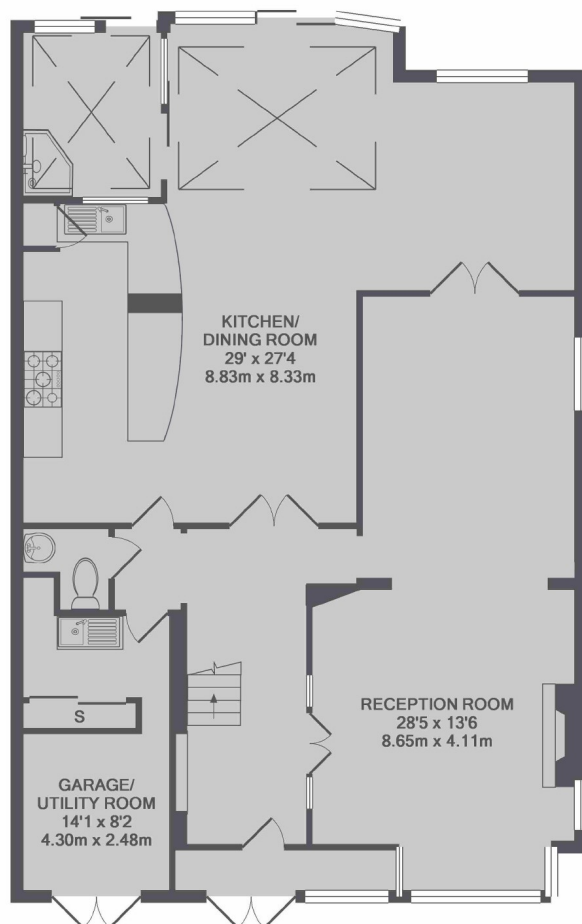
A four bedroom detached family house in the heart of Grove Park measuring in excess of 2,200 sq ft, this impressive house offers a large modern kitchen with ample space for dining and direct access to a large private garden, double reception room, four double bedrooms, three bathrooms and off-street parking for three cars.

- Four Bedrooms • Large Living Space • Eat-In Kitchen •
- Private Garage • Off-Street Parking • Large Gardem •

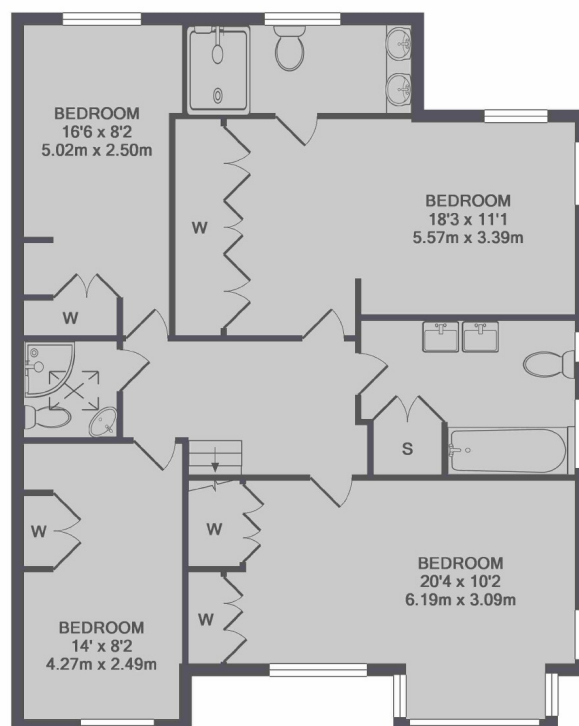


FLETCHERS

ESTATE AGENTS



GROUND FLOOR



1ST FLOOR

TOTAL APPROX. FLOOR AREA 2242 SQ.FT. (208.3 SQ.M.)

Fletchers Chiswick High Road Lettings
86 Chiswick High Road, Chiswick, London, W4 1SY
020 8742 4100
chiswicklettings@fletcherestates.com

Energy Rating: E. We aim to make our particulars both accurate and reliable. However they are not guaranteed; nor do they form part of an offer or contract. If you require clarification on any points then please contact us, especially if you're traveling some distance to view. Please note that appliances and heating systems have not been tested and therefore no warranties can be given as to their good working order.