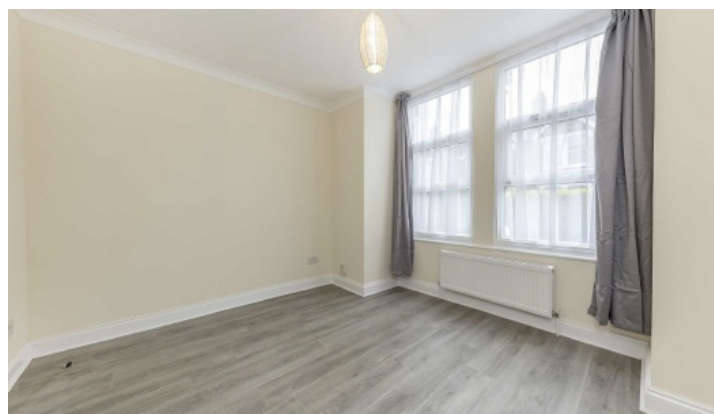


FLETCHERS

ESTATE AGENTS



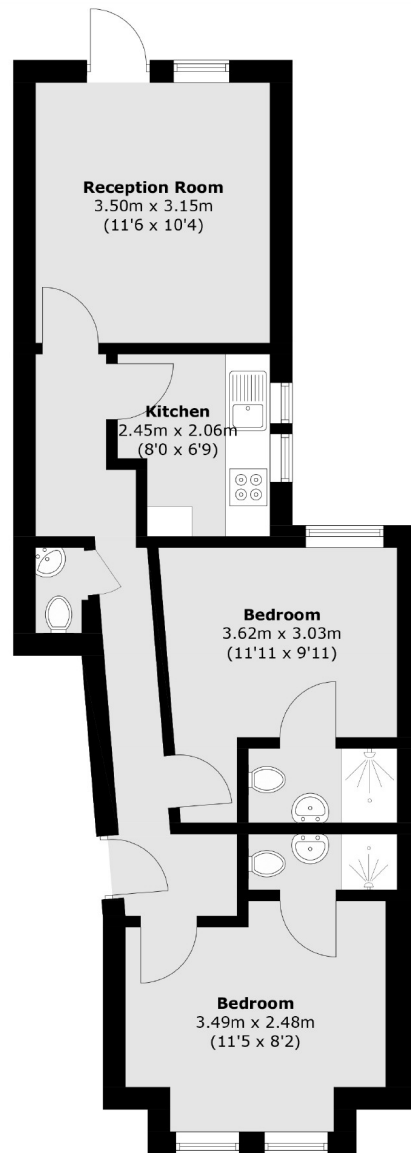
Ivy Crescent, W4

£357 Per week (£1,550 pcm)

This well presented two double bedroom property has a bright reception space with direct access to a private patio garden and two shower rooms.

Ivy Crescent is a quiet residential road in a much sought after Chiswick Park location and within a quarter of a mile of Chiswick Park Underground Station.

- Two Bedrooms • Two Bathrooms • Private Garden • Newly Refurbished • Ground Floor Property • Chiswick Park Station •



Lower Ground Floor

Total area (approx.): 49.2 sq. m (529 sq. ft)

Fletchers Chiswick High Road Lettings
86 Chiswick High Road, Chiswick, London, W4 1SY
020 8742 4100
chiswicklettings@fletcherestates.com

Energy Rating: D. We aim to make our particulars both accurate and reliable. However they are not guaranteed; nor do they form part of an offer or contract. If you require clarification on any points then please contact us, especially if you're traveling some distance to view. Please note that appliances and heating systems have not been tested and therefore no warranties can be given as to their good working order.