



Esmond Gardens, W4

£508

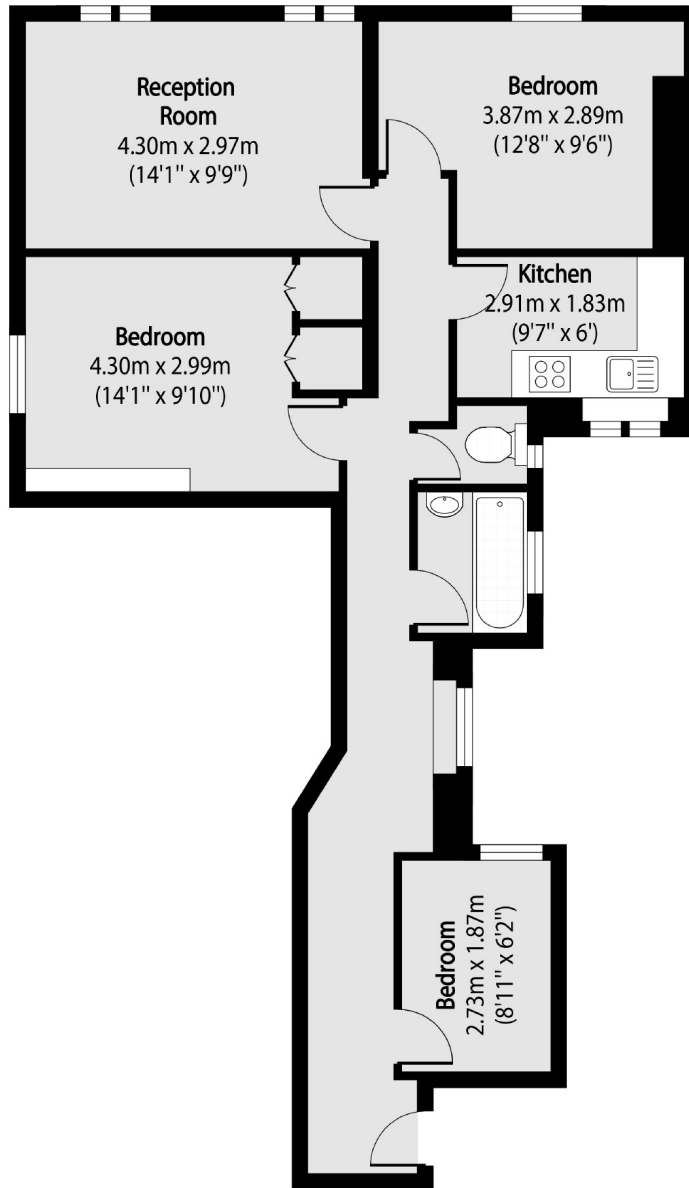
A well presented two bedroom mansion flat in a sought after development with a reception room, kitchen and a bathroom with a separate W.C. The property also benefits from an extra study room.

Esmond Gardens is a mansion block on South Parade overlooking Acton Green in the Bedford Park conservation area, within 0.2 miles of Turnham Green Tube Station, a short walk from Chiswick's shops and restaurants and with easy access to and from London via the A4.

- Two bedrooms and a study • Mansion Block • First Floor Flat • Bedford Park Area • Separate WC • Close To Transport •

FLETCHERS

ESTATE AGENTS



Total area (approx): 66.02 sq m (711 sq. ft)

Fletchers Chiswick High Road Sales
86 Chiswick High Road, Chiswick, London, W4 1SY
020 8987 3000
chiswicksales@fletcherestates.com

Energy Rating: D. We aim to make our particulars both accurate and reliable. However they are not guaranteed; nor do they form part of an offer or contract. If you require clarification on any points then please contact us, especially if you're traveling some distance to view. Please note that appliances and heating systems have not been tested and therefore no warranties can be given as to their good working order.