

FLETCHERS

ESTATE AGENTS



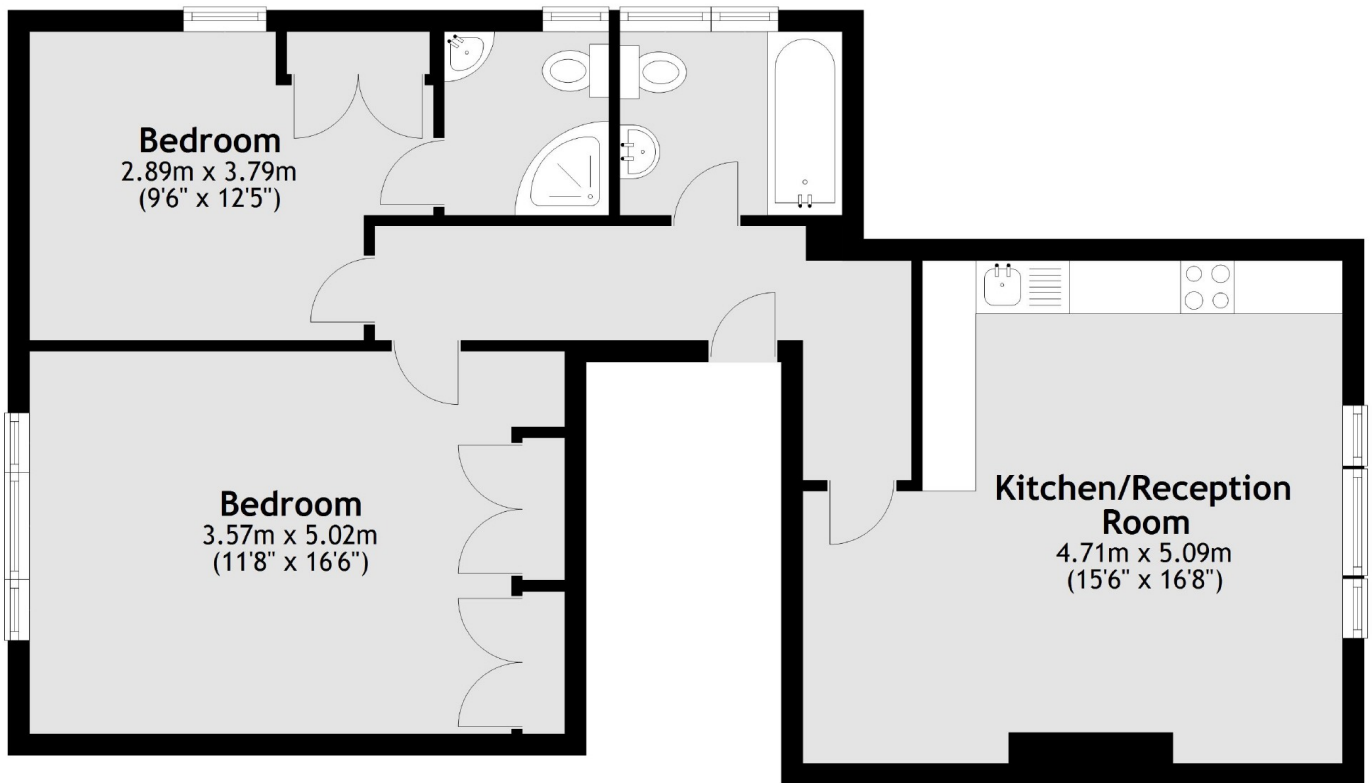
Grove Park Road, W4

£600 Per week (£2800 pcm)

Grove Park Road is a charming, wide tree-lined street, one of Chiswick's premier addresses in close proximity to the wonderful grounds at Chiswick House, a very short walk to the River Thames and the local shops of Grove Park. The historic pubs along the towpath at Strand on the Green can be found a few moments away.

Chiswick itself offers easy access to Central London, the A4, M4, and onto the M25 for the M3 and M40. Chiswick Mainline Station is within a very short walk with a regular fast connection to Clapham Junction, Vauxhall and Waterloo.

First Floor



Total area: approx. 64.2 sq. metres (691.1 sq. feet)

Fletchers Chiswick High Road Lettings
86 Chiswick High Road, Chiswick, London, W4 1SY
020 8742 4100
chiswicklettings@fletcherstates.com

Energy Rating: B. We aim to make our particulars both accurate and reliable. However they are not guaranteed; nor do they form part of an offer or contract. If you require clarification on any points then please contact us, especially if you're traveling some distance to view. Please note that appliances and heating systems have not been tested and therefore no warranties can be given as to their good working order.