

FLETCHERS

ESTATE AGENTS



Bromyard Avenue, W3

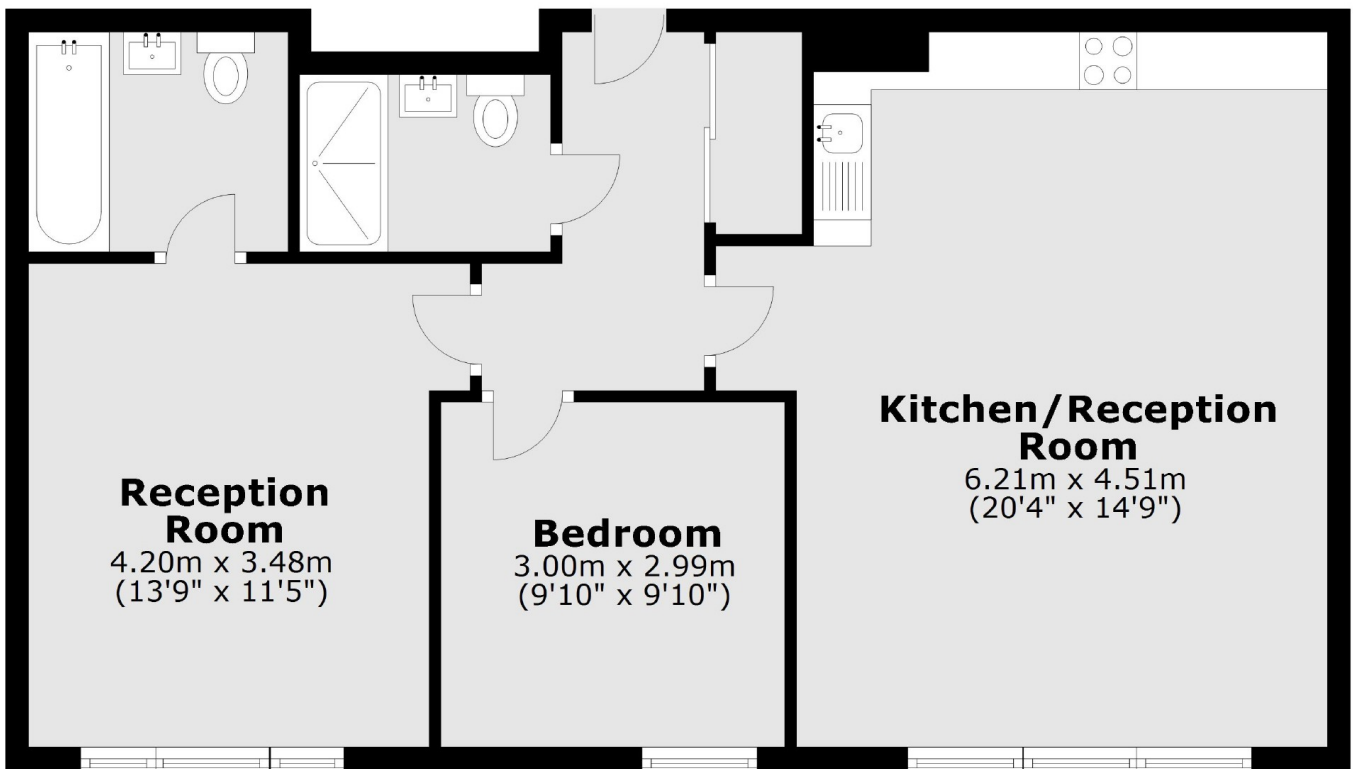
£554 Per week (£2400 pcm)

A modern apartment on the ground floor of this prestigious gated development, comprising large open plan kitchen/reception with wood floors, two double bedrooms with storage and two bathrooms, one of which is en-suite. Further benefits include one secure allocated off-street parking space, concierge and stunning communal gardens. The property is extremely well located for transport links into Central London and the West, and moments away from local shops and amenities.

Bromyard House leads directly to Uxbridge Road with only a short bus ride to Shepherds Bush Market Underground station, and then onto the World Famous Westfield Shopping Centre with its incredible range of High Street and Designer brands, restaurants and entertainment facilities.

- Two Bedrooms • En suite • Communal Gardens • Open plan reception • One Parking Space • Storage • 24 hour concierge •

Ground Floor



Total area: approx. 69.2 sq. metres (744.6 sq. feet)

Fletchers Chiswick High Road Lettings
86 Chiswick High Road, Chiswick, London, W4 1SY
020 8742 4100
chiswicklettings@fletcherestates.com

Energy Rating: C. We aim to make our particulars both accurate and reliable. However they are not guaranteed; nor do they form part of an offer or contract. If you require clarification on any points then please contact us, especially if you're traveling some distance to view. Please note that appliances and heating systems have not been tested and therefore no warranties can be given as to their good working order.