

FLETCHERS

ESTATE AGENTS



Orchard Place, W4

£3,461 Per week (£15,000 pcm)

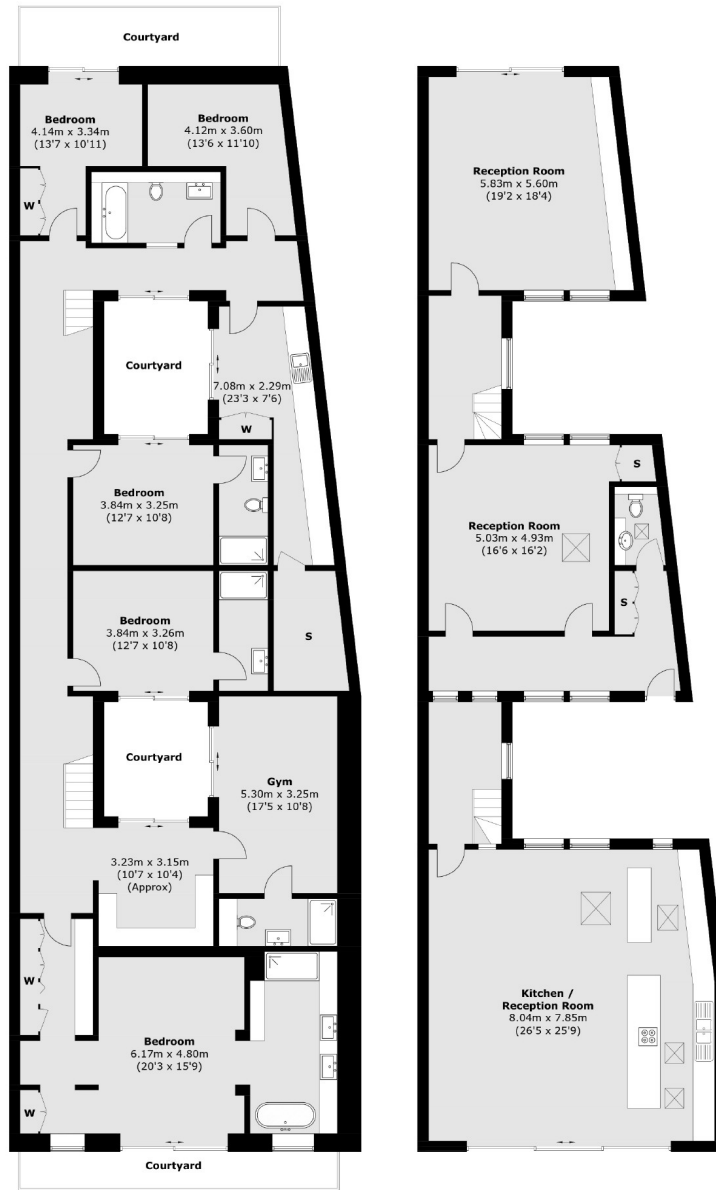
This exceptional six bedroom house with a large kitchen with integrated appliances, and a dining area with floor to ceilings bi-fold doors leading onto a large private south facing garden.

Orchard Place is Ideally situated just a short walk from the wide choice of boutique shops, cafes and restaurants on the High Road, also ideal or access to Turnham Green / Stamford Brook underground stations (District Line) as well as major road links A4/M4.

- Six Bedrooms • Five Bathrooms • Cinema Room • South Facing Garden • Off-Street Parking • Turnham Green •

FLETCHERS

ESTATE AGENTS



Basement

Ground Floor

Total area (approx.): 371.3 sq. m (3996.5 sq. ft)
(Excluding Courtyards)

Fletchers Chiswick High Road Lettings
86 Chiswick High Road, Chiswick, London, W4 1SY
020 8742 4100
chiswicklettings@fletcherstates.com

Energy Rating: B. We aim to make our particulars both accurate and reliable. However they are not guaranteed; nor do they form part of an offer or contract. If you require clarification on any points then please contact us, especially if you're traveling some distance to view. Please note that appliances and heating systems have not been tested and therefore no warranties can be given as to their good working order.