

FLETCHERS

ESTATE AGENTS



Burlington Road, W4

£1,847 Per week (£8000 pcm)

A Victorian semi-detached six bedroom family home with nearly 2,500 sq ft of accommodation, arranged over four floors and with off-street parking for three cars.

The property is in the centre of Chiswick, only a few moments to Gunnersbury station and the many shops and restaurants on the High Road are just on your doorstep, whilst having easy access into London.



****VIDEO TOUR AVAILABLE****

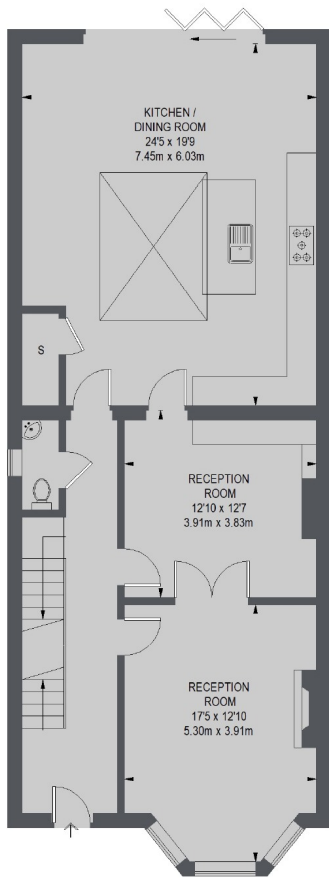
A stunning Victorian semi-detached six bedroom family home with nearly 2,500 sq ft of accommodation. With a double front reception room, large modern eat-in kitchen, 83' mature garden and off-street parking for three cars.

- Six Bedrooms • Off-Street Parking • Three Bathrooms •
- Large Garden • 2,500 Sq Ft • Built-In Storage •

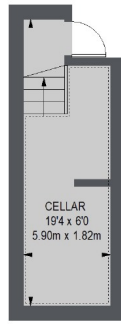


FLETCHERS

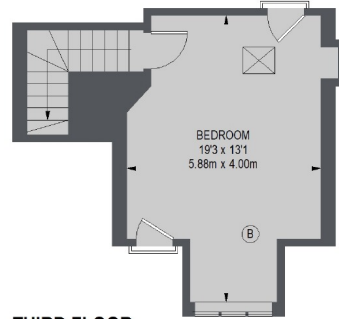
ESTATE AGENTS



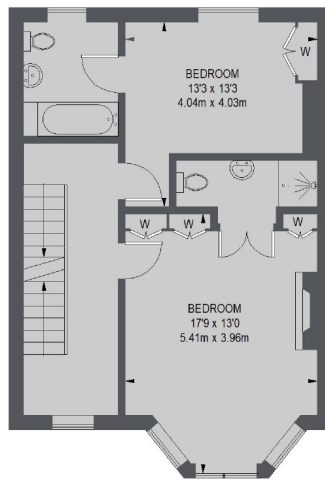
GROUND FLOOR



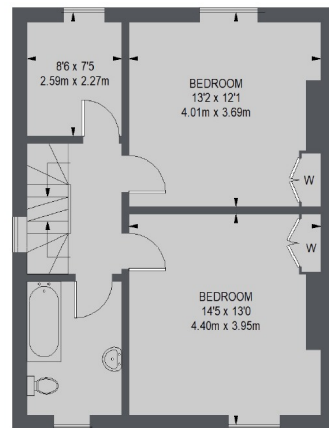
CELLAR




THIRD FLOOR



FIRST FLOOR



SECOND FLOOR

 = REDUCED HEADROOM
BELOW 1.5 M / 5'0

TOTAL APPROX. FLOOR AREA 2535 SQ. FT. (235.55 SQ. M.)

Fletchers Chiswick High Road Lettings
86 Chiswick High Road, Chiswick, London, W4 1SY
020 8742 4100
chiswicklettings@fletcherestates.com

Energy Rating: E. We aim to make our particulars both accurate and reliable. However they are not guaranteed; nor do they form part of an offer or contract. If you require clarification on any points then please contact us, especially if you're traveling some distance to view. Please note that appliances and heating systems have not been tested and therefore no warranties can be given as to their good working order.