

FLETCHERS

ESTATE AGENTS



Esmond Gardens, W4

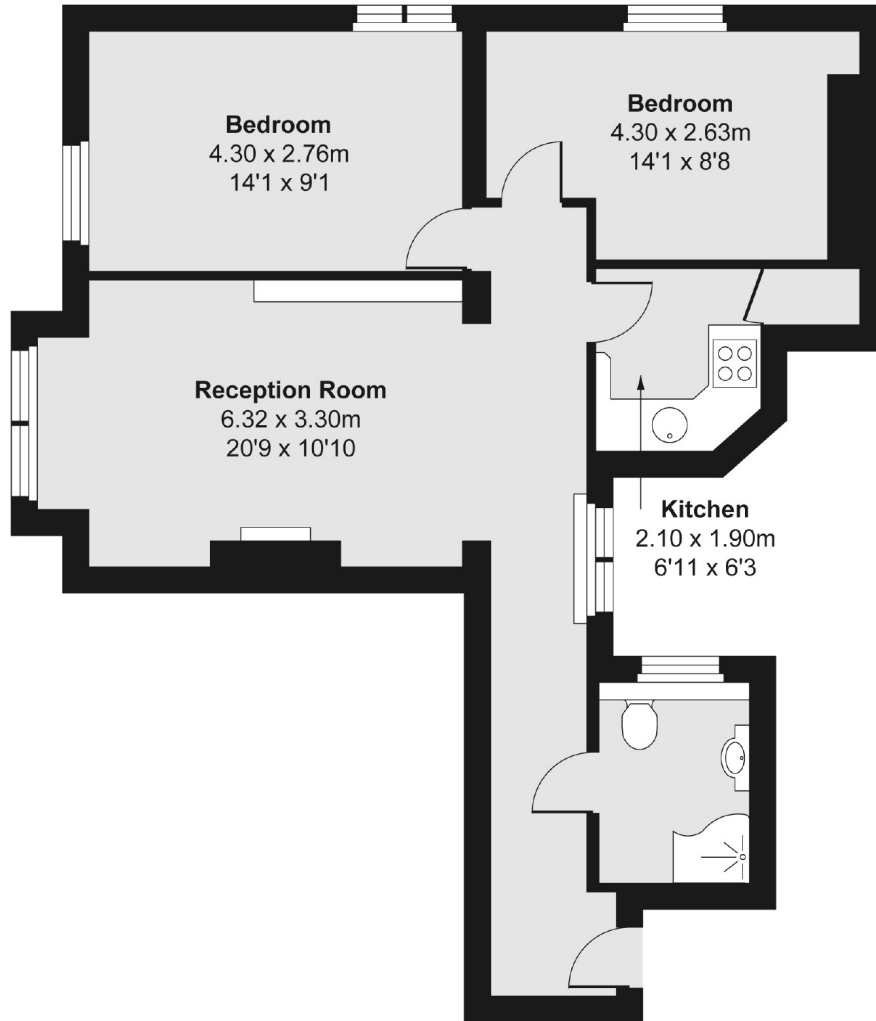
£531 Per week (£2300 pcm)

This two double bedroom flat in a desirable mansion conversion in the heart of Bedford park. The property has an extremely spacious reception area with a separate kitchen. The property has excellent natural light and is very well maintained.

Located in the much sought after Bedford Park conservation area, quarter of a mile from Turnham Green tube station and the amenities of Chiswick High Road.

- Two Bedrooms • Mansions Block • Large Reception Room • Separate Kitchen • Bedford Park • Central Location •

First Floor



Total area (approx.) 60.09 sq. m (647 sq. ft)

Fletchers Chiswick High Road Lettings
86 Chiswick High Road, Chiswick, London, W4 1SY
020 8742 4100
chiswicklettings@fletcherstates.com

Energy Rating: C. We aim to make our particulars both accurate and reliable. However they are not guaranteed; nor do they form part of an offer or contract. If you require clarification on any points then please contact us, especially if you're traveling some distance to view. Please note that appliances and heating systems have not been tested and therefore no warranties can be given as to their good working order.