

FLETCHERS

ESTATE AGENTS



Arlington Gardens, W4

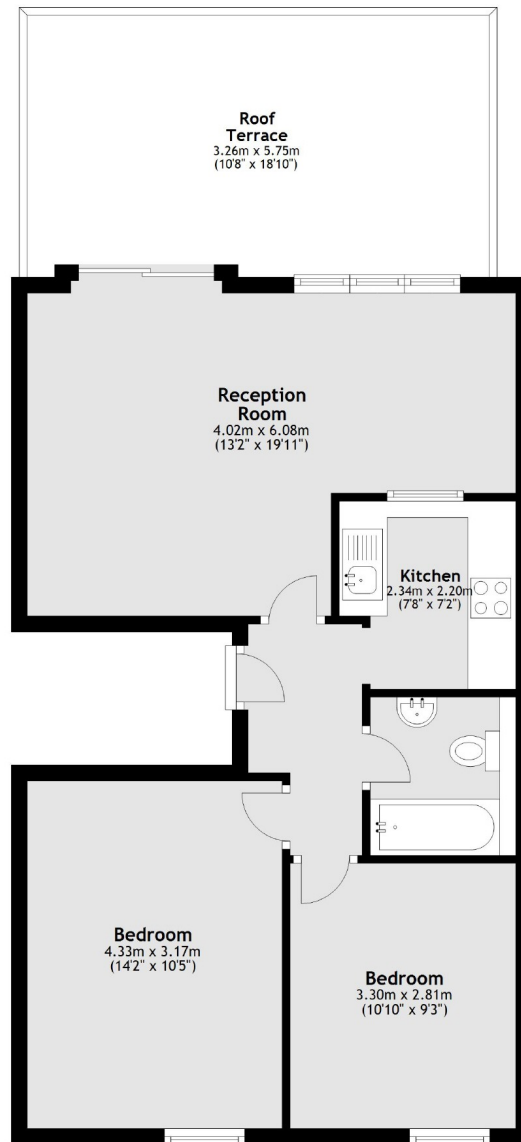
£554 Per week (£2400 pcm)

A well presented two bedroom property offers a spacious reception room with direct access to a stunning roof terrace, two double bedrooms and a modern kitchen and a bathroom.

Arlington Gardens is perfectly situated off Turnham Green within a quarter of a mile of Chiswick Park and Gunnersbury underground stations.

- Two Double Bedrooms • Semi Open Plan Living • Modern Bathroom • Spacious Reception • Private Roof Terrace • Central Location •

Second Floor



Main area: Approx. 57.9 sq. metres (623.0 sq. feet)
Plus roof terrace, approx. 19.0 sq. metres (204.3 sq. feet)

Fletchers Chiswick High Road Lettings
86 Chiswick High Road, Chiswick, London, W4 1SY
020 8742 4100
chiswicklettings@fletcherstates.com

Energy Rating: D. We aim to make our particulars both accurate and reliable. However they are not guaranteed; nor do they form part of an offer or contract. If you require clarification on any points then please contact us, especially if you're traveling some distance to view. Please note that appliances and heating systems have not been tested and therefore no warranties can be given as to their good working order.