

FLETCHERS

ESTATE AGENTS



St. Marys Grove, W4

£1,212 Per week (£5250 pcm)

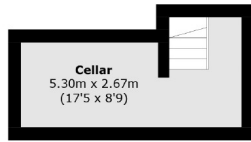
A five bedroom detached family period home in the sought after Grove park area of Chiswick with over 2100 sqft. There are two modern bath/shower rooms, a large dining room leading onto a modern fully fitted kitchen and a reception room with doors opening onto a mature garden. The property further benefits from a utility room, downstairs WC, cellar in the basement and plenty of storage throughout.

St Mary's Grove is situated in Grove Park with free on street parking and easy access to Fauconberg Village, the River Thames and Chiswick Railway station.

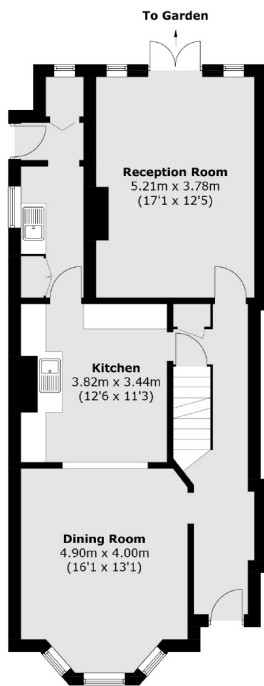
- Five Bedrooms • Detached House • Period Feature's • Garden • Cellar and Utility Room • Unfurnished •

FLETCHERS

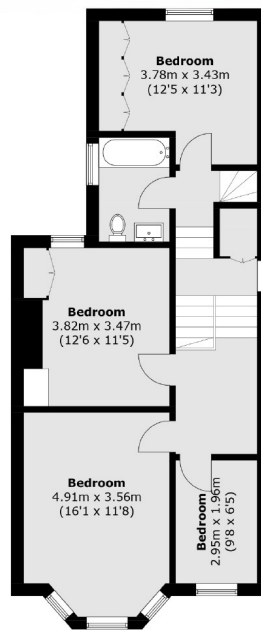
ESTATE AGENTS



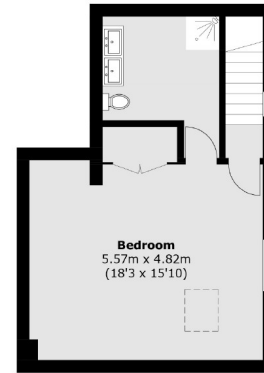
Basement



Ground Floor



First Floor



Second Floor

Total area (approx.): 194.8 sq. m (2,096.8 sq. ft)

Fletchers Chiswick High Road Lettings
86 Chiswick High Road, Chiswick, London, W4 1SY
020 8742 4100
chiswicklettings@fletcherestates.com

Energy Rating: E. We aim to make our particulars both accurate and reliable. However they are not guaranteed; nor do they form part of an offer or contract. If you require clarification on any points then please contact us, especially if you're traveling some distance to view. Please note that appliances and heating systems have not been tested and therefore no warranties can be given as to their good working order.