



## Heathfield Terrace, W4

£450,000

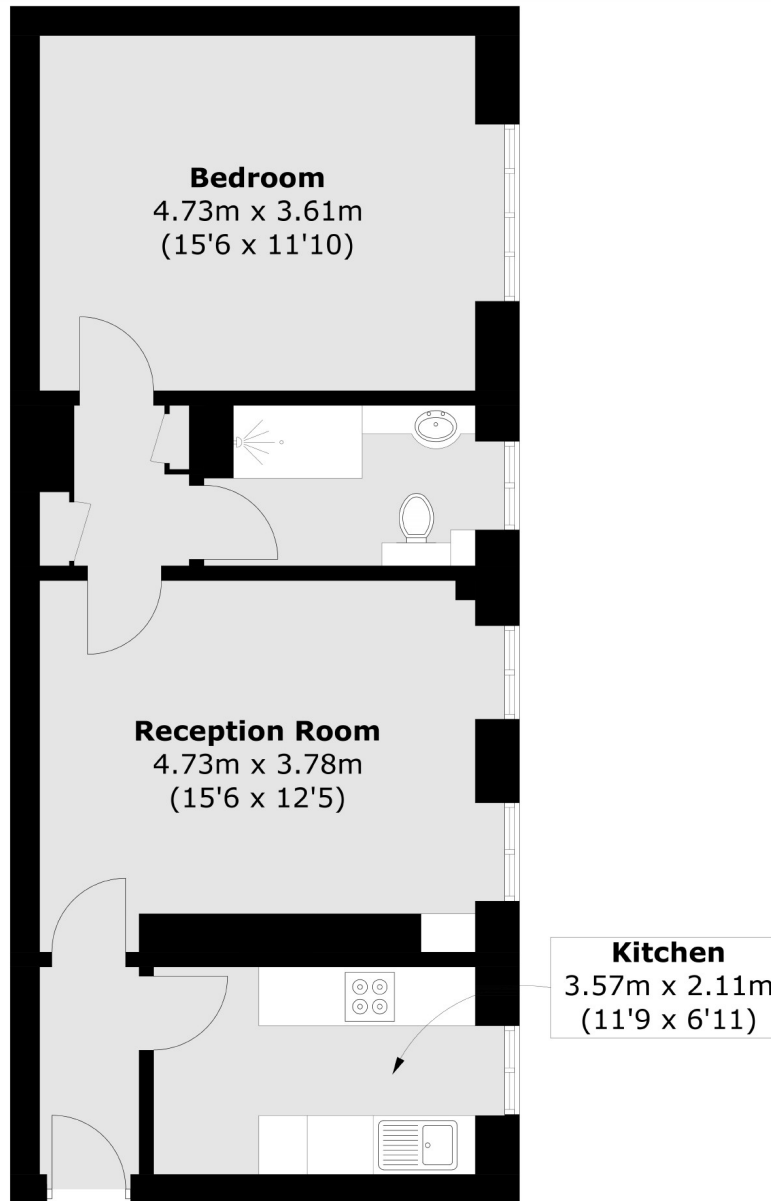
OIEO £450,000. A superbly presented 5th floor (top) one bedroom apartment with a sunny dual aspect, lovely proportioned rooms and the rare benefit of a private lock up garage.

Heathfield Court is a very well managed and maintained apartment block, in a prime location only moments from the wonderful array of High Street brands, restaurants, boutiques and supermarkets on Chiswick High Road, and has easy access to either Chiswick Park or Turnham Green stations.

- Top Floor Apartment • Garage Included • No Onward Chain • Lift • Communal Gardens • Residents Parking •

# FLETCHERS

ESTATE AGENTS



Total area (approx.): 53.1 sq. m (571.6 sq. ft)

Fletchers Chiswick Turnham Green Sales  
58 Turnham Green Terrace, London, W4 1QP  
020 8987 3000  
[chiswicksales@fletcherestates.com](mailto:chiswicksales@fletcherestates.com)

Energy Rating: E. We aim to make our particulars both accurate and reliable. However they are not guaranteed; nor do they form part of an offer or contract. If you require clarification on any points then please contact us, especially if you're traveling some distance to view. Please note that appliances and heating systems have not been tested and therefore no warranties can be given as to their good working order.