

# FLETCHERS

ESTATE AGENTS



## Grange Road, W4

£500,000

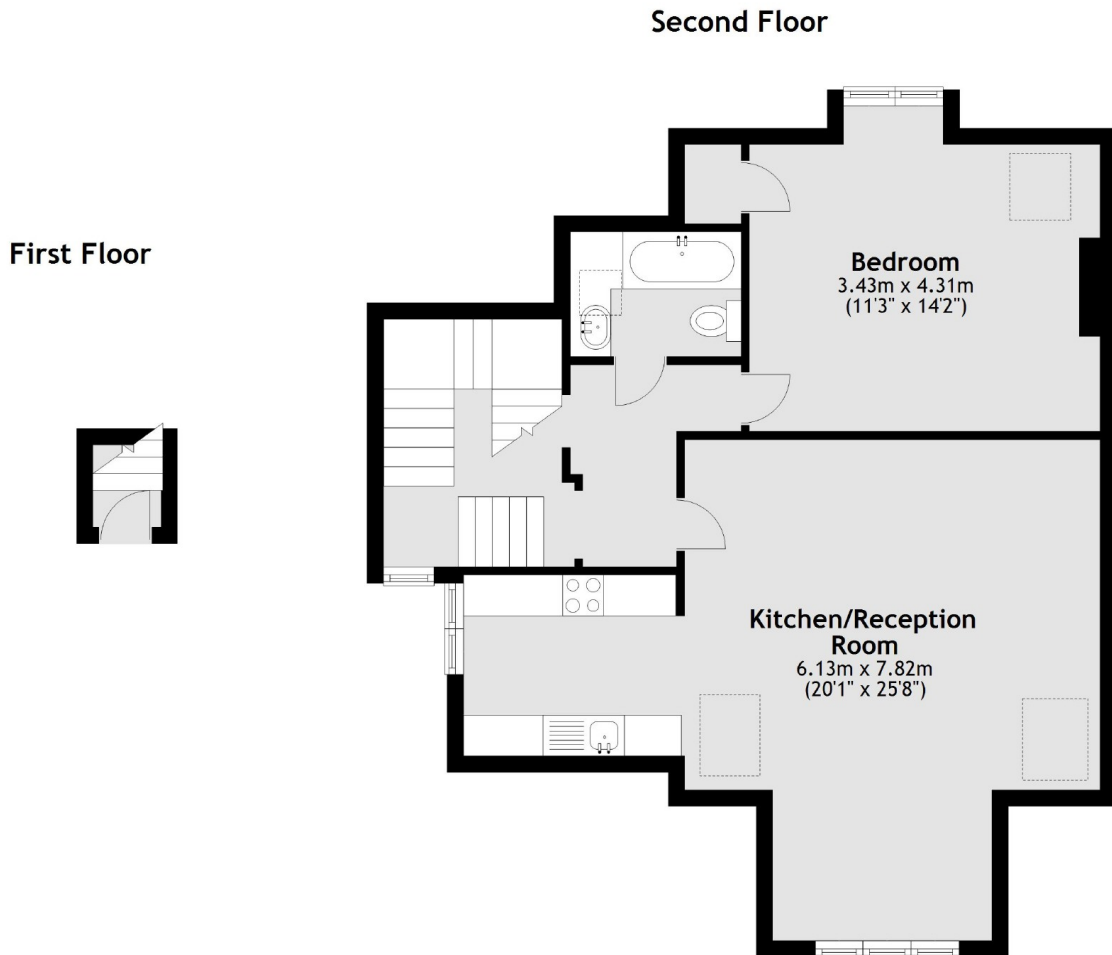
A well presented top floor flat in central Chiswick. The property spreads over 700sqft with open plan living and well proportioned rooms. This property is offered with no onward chain.

The property is on Grange Road in Chiswick in perfect reach to Gunnersbury Tube station (District line and Overground) with easy access to the endless shops, cafes and pubs of Chiswick High Street

- Offers In Excess Of
- Period Conversion
- Central Chiswick
- No Onward Chain
- Gunnersbury Station
- Chiswick High Road

# FLETCHERS

ESTATE AGENTS



Total area: approx. 65.8 sq. metres (708.8 sq. feet)

Fletchers Chiswick Turnham Green Sales  
58 Turnham Green Terrace, London, W4 1QP  
020 8987 3000  
chiswicksales@fletcherestates.com

Energy Rating: D. We aim to make our particulars both accurate and reliable. However they are not guaranteed; nor do they form part of an offer or contract. If you require clarification on any points then please contact us, especially if you're traveling some distance to view. Please note that appliances and heating systems have not been tested and therefore no warranties can be given as to their good working order.