

# FLETCHERS

ESTATE AGENTS



## Ennismore Avenue, W4

£525,000

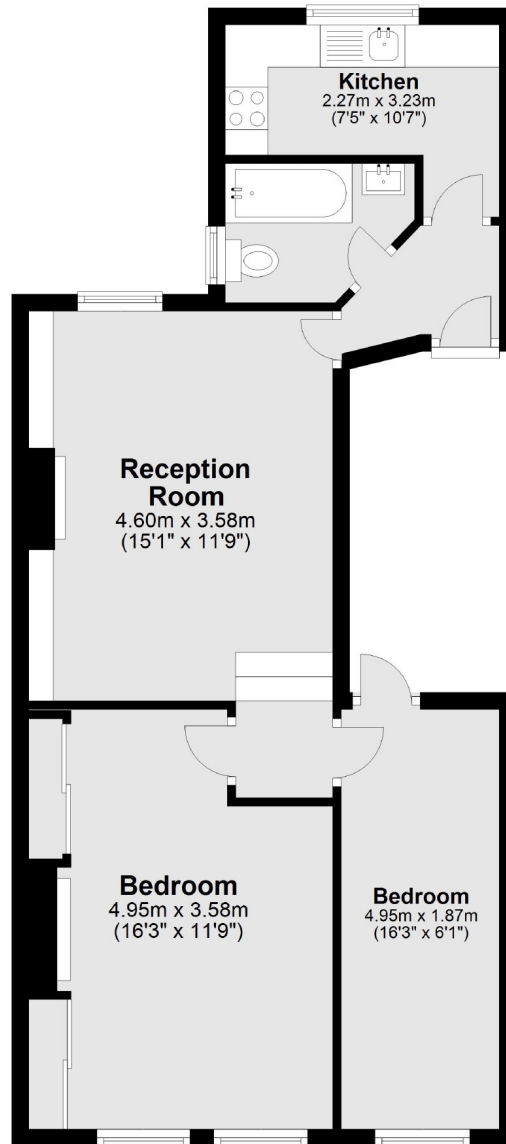
A two bedroom apartment within Edwardian building, with beautiful sash windows throughout, well proportioned rooms and offered with no onward chain.

Ennismore Avenue runs due north off Chiswick High road close to the junction of Chiswick Lane and is less than half a mile from Turnham Green & Stamford Brook underground stations, and yards from the High roads excellent shops, bars and restaurants.

- Guide Price • No Onward Chain • Two Bedrooms • Sash Windows • First Floor • Chiswick High Road •

# FLETCHERS

ESTATE AGENTS



Total area: approx. 55.9 sq. metres (601.8 sq. feet)

Fletchers Chiswick Turnham Green Sales  
58 Turnham Green Terrace, London, W4 1QP  
020 8987 3000  
[chiswicksales@fletcherestates.com](mailto:chiswicksales@fletcherestates.com)

Energy Rating: C. We aim to make our particulars both accurate and reliable. However they are not guaranteed; nor do they form part of an offer or contract. If you require clarification on any points then please contact us, especially if you're traveling some distance to view. Please note that appliances and heating systems have not been tested and therefore no warranties can be given as to their good working order.