

FLETCHERS

ESTATE AGENTS



Silver Crescent, W4

£1,400,000

A contemporary bay fronted family home split over four storeys.



With entertaining space in the form of a double reception room, an extended kitchen/diner leading through to a West facing garden. A basement room offers further flexible living space currently used as a family room or playroom, alongside a separate utility room and WC. Upstairs, are four double bedrooms and three bathrooms including an en suite to the master.

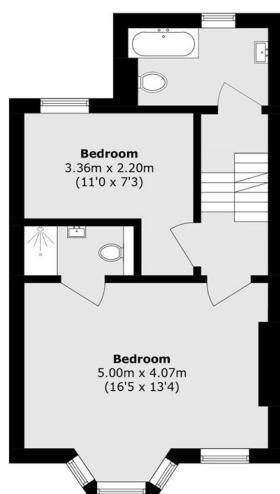
Silver Crescent is a quiet tree-lined residential road, with all of the boutiques, cafés and restaurants of Chiswick High Road on the doorstep. The property's location provides easy access in and out of London via the A4/M4, with Gunnersbury Tube Station (district and overground) being only 300 meters away.

- Four Bedrooms • Three Bathrooms • Basement Family Room •
- Utility Room • Double Reception • West Facing Garden •

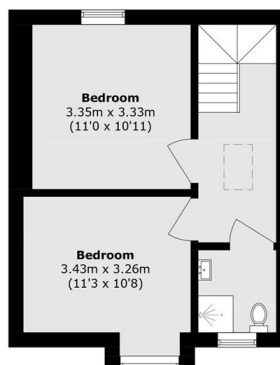


FLETCHERS

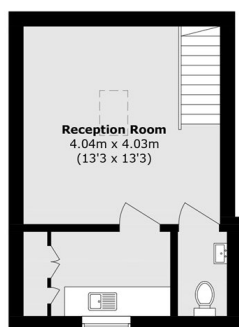
ESTATE AGENTS



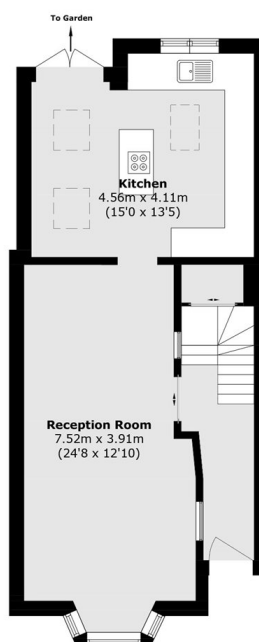
First Floor



Second Floor



Basement Floor



Ground Floor

Total area (approx.): 148.5 sq. m (1598.4 sq. ft)

Fletchers Chiswick Turnham Green Sales
58 Turnham Green Terrace
London
W4 1QP
020 8987 3000
chiswicksales@fletcherestates.com

Energy Rating: B We aim to make our particulars both accurate and reliable. However they are not guaranteed; nor do they form part of an offer or contract. If you require clarification on any points then please contact us, especially if you're traveling some distance to view. Please note that appliances and heating systems have not been tested and therefore no warranties can be given as to their good working order