

# FLETCHERS

ESTATE AGENTS



## Thorney Hedge Road, W4

£650,000

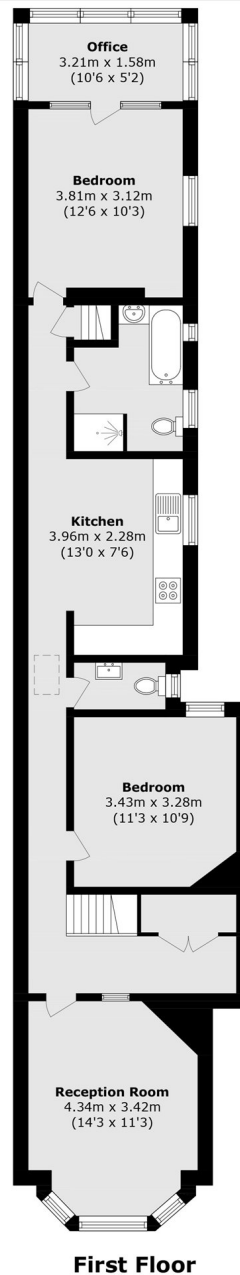
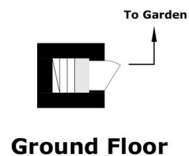
A fantastic opportunity to purchase a spacious two bedroom apartment, with a private West facing garden. On the first floor of a double fronted home. The property has a separate lounge, eat in kitchen, a family bathroom plus second WC, and an office. The garden is well kept and landscaped, with plenty of space for a shed/workshop and outdoor dining. There is further potential to extend in to the loft, with permission previously having been agreed (now elapsed).

Thorney Hedge Road is a quiet tree-lined residential road, with all of the boutiques, cafés and restaurants of Chiswick High Road on the doorstep. The property's location provides easy access in and out of London via the A4/M4, with Gunnersbury Tube Station (district and overground) being only 300 meters away.

- Two Bedrooms • Eat in Kitchen • Spacious Footprint • Office • West Facing Garden • Potential to Extend •

# FLETCHERS

ESTATE AGENTS



Total area (approx.): 81.8 sq. m (880.4 sq. ft)

Fletchers Chiswick Turnham Green Sales  
58 Turnham Green Terrace, London, W4 1QP  
020 8987 3000  
[chiswicksales@fletcherestates.com](mailto:chiswicksales@fletcherestates.com)

Energy Rating: . We aim to make our particulars both accurate and reliable. However they are not guaranteed; nor do they form part of an offer or contract. If you require clarification on any points then please contact us, especially if you're traveling some distance to view. Please note that appliances and heating systems have not been tested and therefore no warranties can be given as to their good working order.