

# FLETCHERS

ESTATE AGENTS



## St. Marys Grove, W4

£450,000

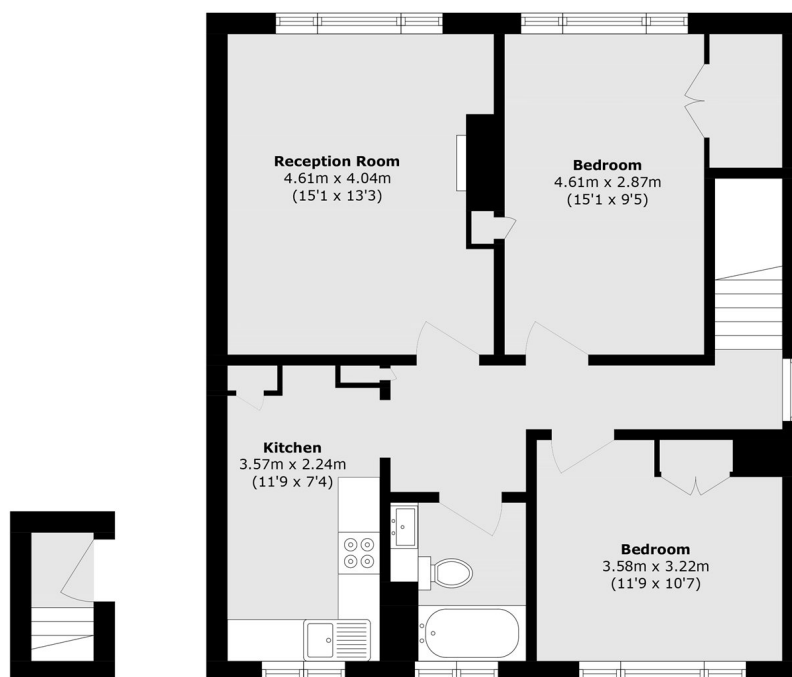
A spacious two bedroom purpose build apartment with circa 791 sq foot of living space. Two large double bedrooms are accompanied by a separate eat in kitchen and a 4.6 x 4 meter reception room. Accessed via a private entrance, the apartment takes up the entire first floor of the building which is also the top floor.

St. Marys Grove is a popular residential street in Grove Park just moments from the independent boutiques and restaurants on Fauconberg Road. Chiswick Station offers a line into Waterloo within 30 minutes, and Gunnersbury tube station/Chiswick High Road are within 0.5 miles walking.

- Two Bedrooms • First / Top Floor • Separate Kitchen • Private Entrance • No Onward Chain • Small Block •

# FLETCHERS

## ESTATE AGENTS



**Ground Floor**

**First Floor**

Total area (approx.): 73.5 sq. m (791.1 sq. ft)

Fletchers Chiswick Turnham Green Sales  
58 Turnham Green Terrace, London, W4 1QP  
020 8987 3000  
[chiswicksales@fletcherestates.com](mailto:chiswicksales@fletcherestates.com)

Energy Rating: . We aim to make our particulars both accurate and reliable. However they are not guaranteed; nor do they form part of an offer or contract. If you require clarification on any points then please contact us, especially if you're traveling some distance to view. Please note that appliances and heating systems have not been tested and therefore no warranties can be given as to their good working order.