

FLETCHERS

ESTATE AGENTS



Ramsay Road, W3

£499,950

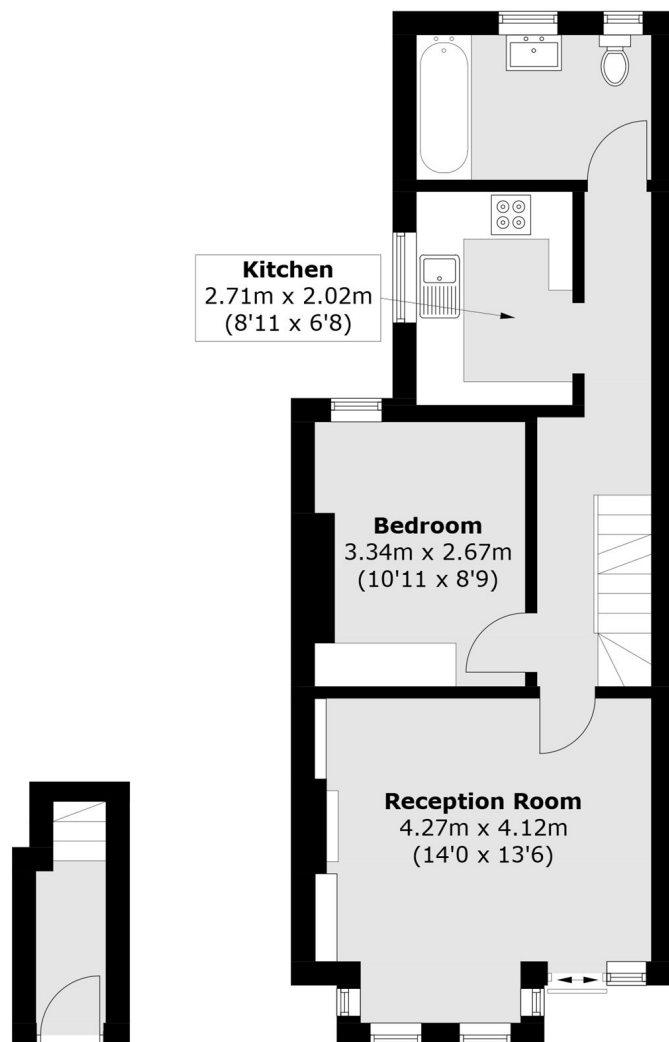
A Victorian split level maisonette accessed via a private entrance and located on a quiet cul-de-sac. The property benefits from a large reception room with bay window and fireplace and a separate kitchen with views over South Acton Park. The two double bedrooms are accompanied by a family bathroom and en suite shower room.

Ramsay Road is a quiet residential cul-de-sac in South Acton, with access to the park and the Overground line on the doorstep. Both Acton and Chiswick high streets are walking distance with Acton Town station and Chiswick Park station offering District and Piccadilly Lines.

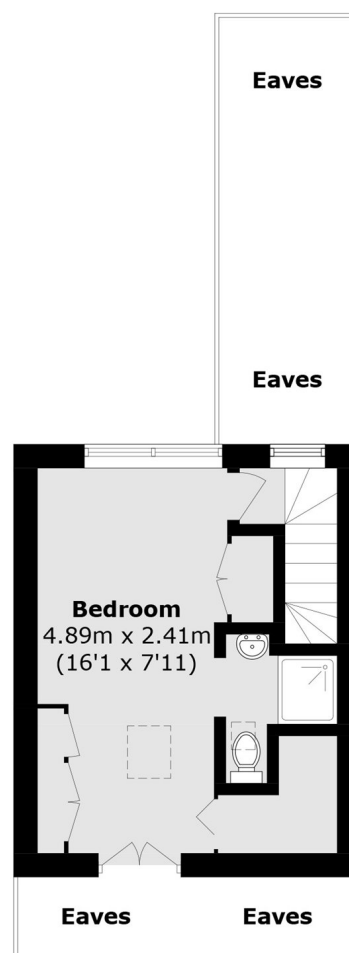
• Victorian Conversion • Two Bedrooms • Two Bathrooms • Private Entrance • Separate Kitchen • Park Views •

FLETCHERS

ESTATE AGENTS



Ground Floor



Second Floor

First Floor

Total area (approx.): 66.6 sq. m (716.8 sq. ft)
(Excluding Eaves)

Fletchers Chiswick Turnham Green Sales
58 Turnham Green Terrace, London, W4 1QP
020 8987 3000
chiswicksales@fletcherestates.com

Energy Rating: D. We aim to make our particulars both accurate and reliable. However they are not guaranteed; nor do they form part of an offer or contract. If you require clarification on any points then please contact us, especially if you're traveling some distance to view. Please note that appliances and heating systems have not been tested and therefore no warranties can be given as to their good working order.