

FLETCHERS

ESTATE AGENTS



Staveley Gardens, W4

£675,000

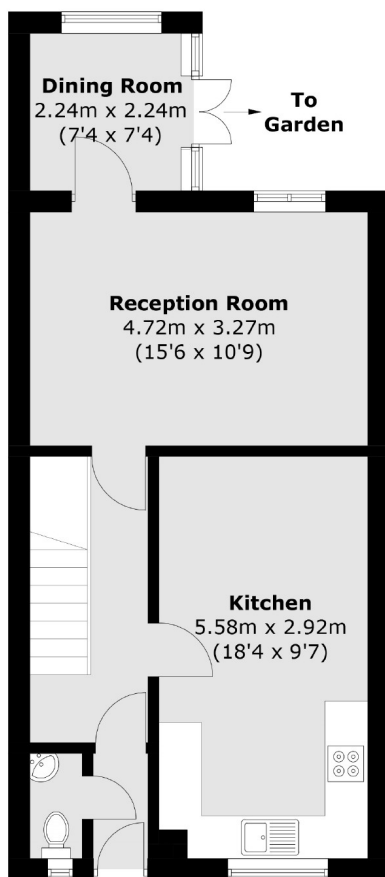
Recently redecorated throughout, this three-bedroom freehold house offers an eat-in kitchen, perfect for family meals and entertaining, while a bright conservatory provides an inviting space to relax or work from home. The property also benefits from a generously sized walk-in wardrobe and a private patio garden.

Staveley Gardens is a well-located residential area near Dukes Meadows and the shops of Chiswick High Road, with easy access to Chiswick Mainline Station, excellent bus links, and Heathrow Airport.

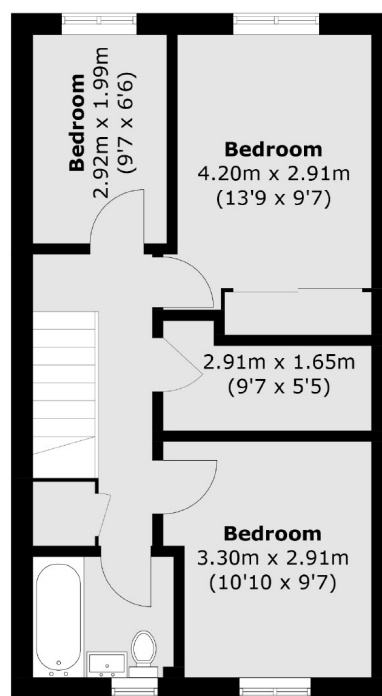
• Freehold • Three Double Bedrooms • Free On Street Parking • No Onward Chain • Quiet Residential Location • Private Garden •

FLETCHERS

ESTATE AGENTS



Ground Floor



First Floor

Total area (approx.): 90.7 sq. m (976.2 sq. ft)

Fletchers Chiswick Turnham Green Sales
58 Turnham Green Terrace, London, W4 1QP
020 8987 3000
chiswicksales@fletcherestates.com

Energy Rating: D. We aim to make our particulars both accurate and reliable. However they are not guaranteed; nor do they form part of an offer or contract. If you require clarification on any points then please contact us, especially if you're traveling some distance to view. Please note that appliances and heating systems have not been tested and therefore no warranties can be given as to their good working order.