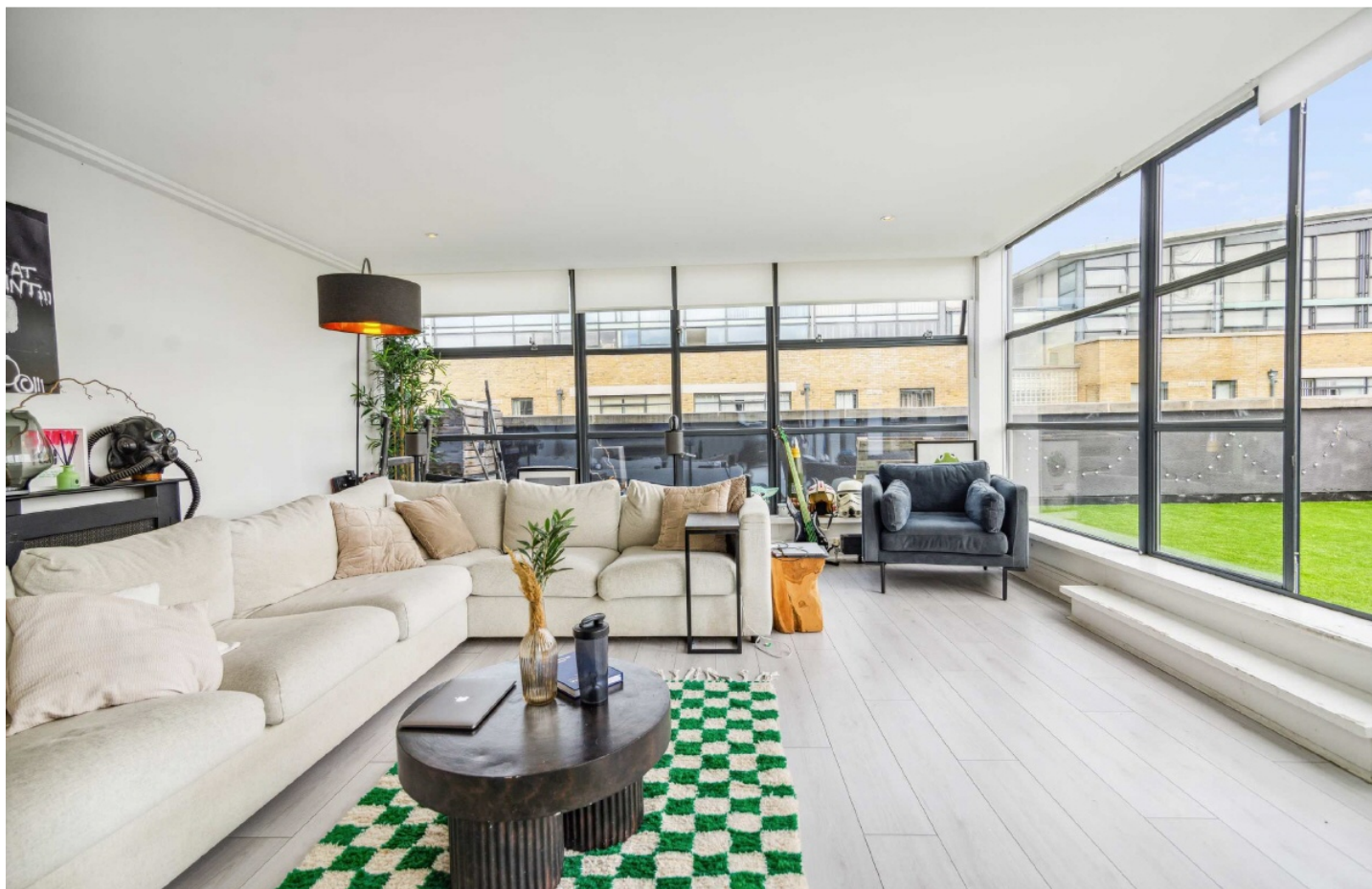


FLETCHERS

ESTATE AGENTS



Ferry Lane, TW8

£900,000

A stunning duplex penthouse apartment with triple aspects to the south, east and west, and direct access to a full width 57' south facing roof terrace with panoramic views over the river Thames.



On the top floors of this impressive building forming part of the Ferry Quays Development, a stunning duplex penthouse apartment with triple aspects to the south, east and west, and direct access to a full width 57' south facing roof terrace with panoramic views over the river Thames.

The third floor features amazing entertaining space with the intercommunicating kitchen/diner and living room both with floor to ceiling windows overlooking and leading directly to the breathtaking full width roof terrace.

Upstairs on the fourth floor (top) are three good double bedrooms, an en suite bathroom and guest shower room.

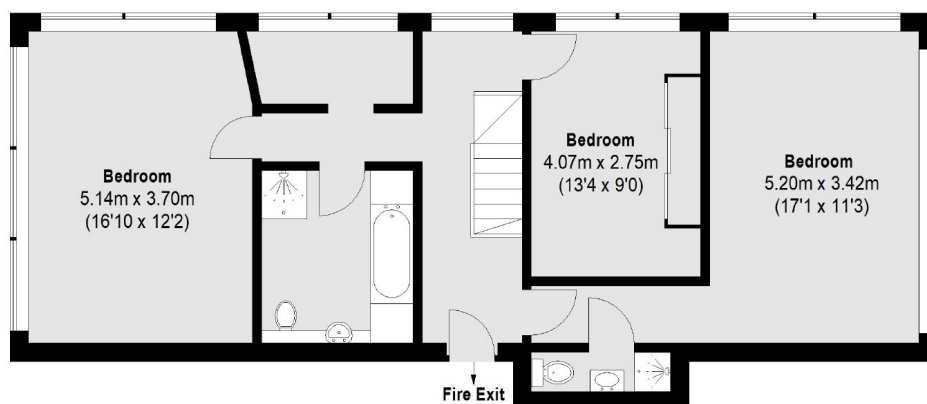
Ferry Quays is an exclusive and well run pedestrian only development with a concierge office, secure underground parking, lift, and immediate access to delightful river walks along the Thames Path. Brentford Overground station is only a 10 minute walk, and the M4 corridor a few minutes drive.

- Three Double Bedrooms • En Suite Bathroom • Direct River Views •
- Sunny Reception Room • Two Parking Spaces • South Facing Terrace •

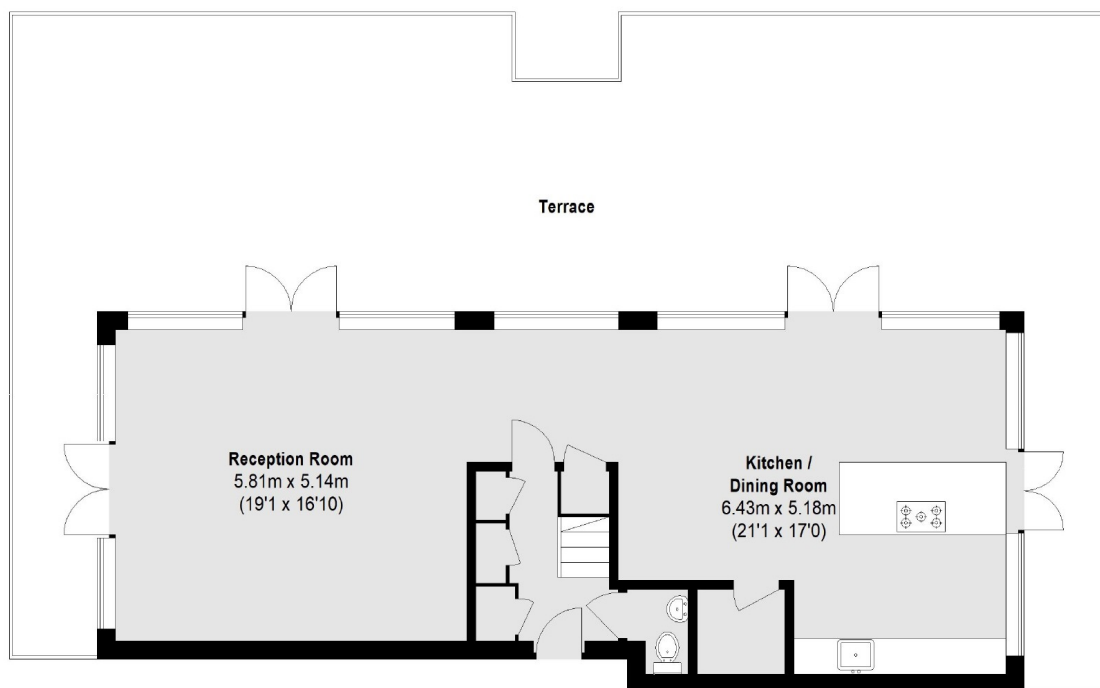


FLETCHERS

ESTATE AGENTS



Fourth Floor



Third Floor

Total area (approx.): 158.10 sq. m (1701 Sq. ft)
Terrace: 103.44 sq. m (1113 Sq. ft)

Fletchers Chiswick Turnham Green Sales
58 Turnham Green Terrace
London
W4 1QP
020 8987 3000
chiswicksales@fletcherestates.com

Energy Rating: C We aim to make our particulars both accurate and reliable. However they are not guaranteed; nor do they form part of an offer or contract. If you require clarification on any points then please contact us, especially if you're traveling some distance to view. Please note that appliances and heating systems have not been tested and therefore no warranties can be given as to their good working order