

# FLETCHERS

ESTATE AGENTS



## Chiswick High Road, W4

£700,000

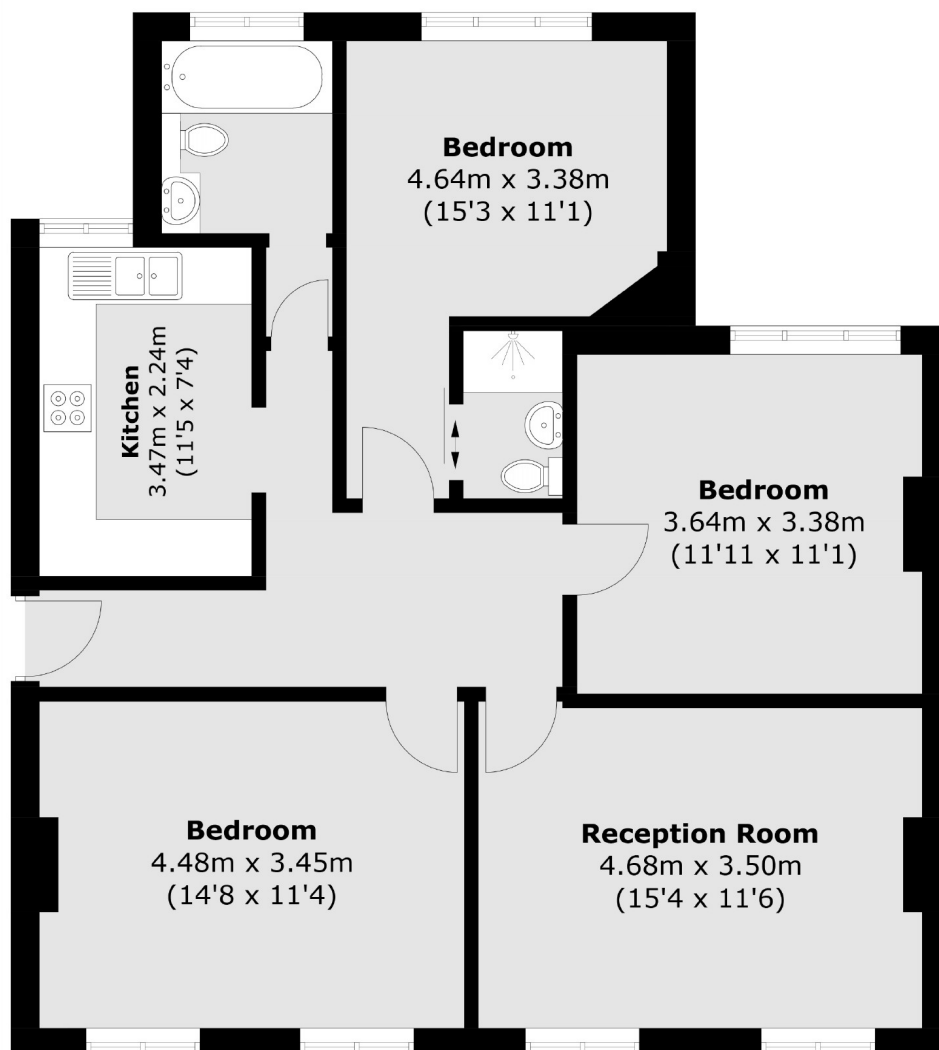
A spacious well maintained three double bedroom apartment located on the popular Chiswick High Road offering plenty of storage, a bright reception room, separate kitchen, family bathroom and en-suite. Offered with no onward chain.

Primely located moments away from the vast amenities Chiswick High Road has to offer including shops, cafés and restaurants. Turnham Green and Stamford Brook tube stations are within walking distance as well as direct bus routes into Hammersmith.

- Three Bedrooms • Well Presented • Separate Kitchen • Ample Storage • Central Location • Stamford Brook Station •

# FLETCHERS

ESTATE AGENTS



Total area (approx.): 85.4 sq. m (919.2 sq. ft)

Fletchers Chiswick Turnham Green Sales  
58 Turnham Green Terrace, London, W4 1QP  
020 8987 3000  
[chiswicksales@fletcherestates.com](mailto:chiswicksales@fletcherestates.com)

Energy Rating: C. We aim to make our particulars both accurate and reliable. However they are not guaranteed; nor do they form part of an offer or contract. If you require clarification on any points then please contact us, especially if you're traveling some distance to view. Please note that appliances and heating systems have not been tested and therefore no warranties can be given as to their good working order.