

# FLETCHERS

ESTATE AGENTS



## Heathfield Road, W3

£400,000

A two bedroom apartment on the raised ground floor of an attractive bay fronted home. You enter into a large, high ceilinged reception room which leads through to a separate kitchen, with two double bedrooms to the rear of the property. A family bathroom is accompanied by a second WC in the rear bedroom.

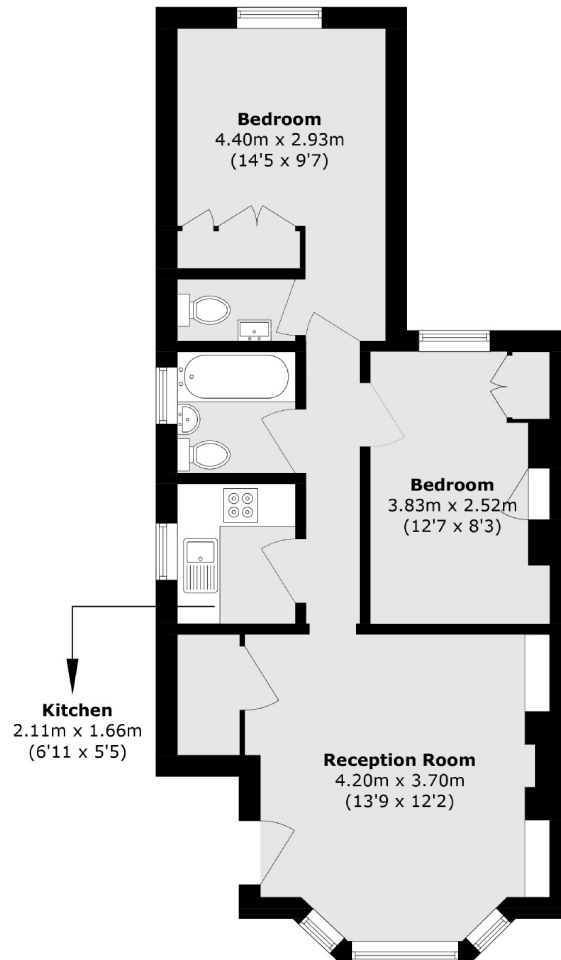
Heathfield Road is a peaceful tree lined street in the Mill Hill conservation area, popular for its proximity to both Acton Town tube and Acton high street. To the South, Turnham Green and Chiswick High Road area also within reach.

• Raised Ground Floor • Two Bedrooms • One Bathroom • Two WCs • High Ceilings • No Onward Chain •

# FLETCHERS

ESTATE AGENTS

---



Total area (approx.): 52.6 sq. m (566.9 sq. ft)

Fletchers Chiswick Turnham Green Sales  
58 Turnham Green Terrace, London, W4 1QP  
020 8987 3000  
[chiswicksales@fletcherestates.com](mailto:chiswicksales@fletcherestates.com)

Energy Rating: . We aim to make our particulars both accurate and reliable. However they are not guaranteed; nor do they form part of an offer or contract. If you require clarification on any points then please contact us, especially if you're traveling some distance to view. Please note that appliances and heating systems have not been tested and therefore no warranties can be given as to their good working order.