

FLETCHERS

ESTATE AGENTS



Windmill Road, TW8

£480,000

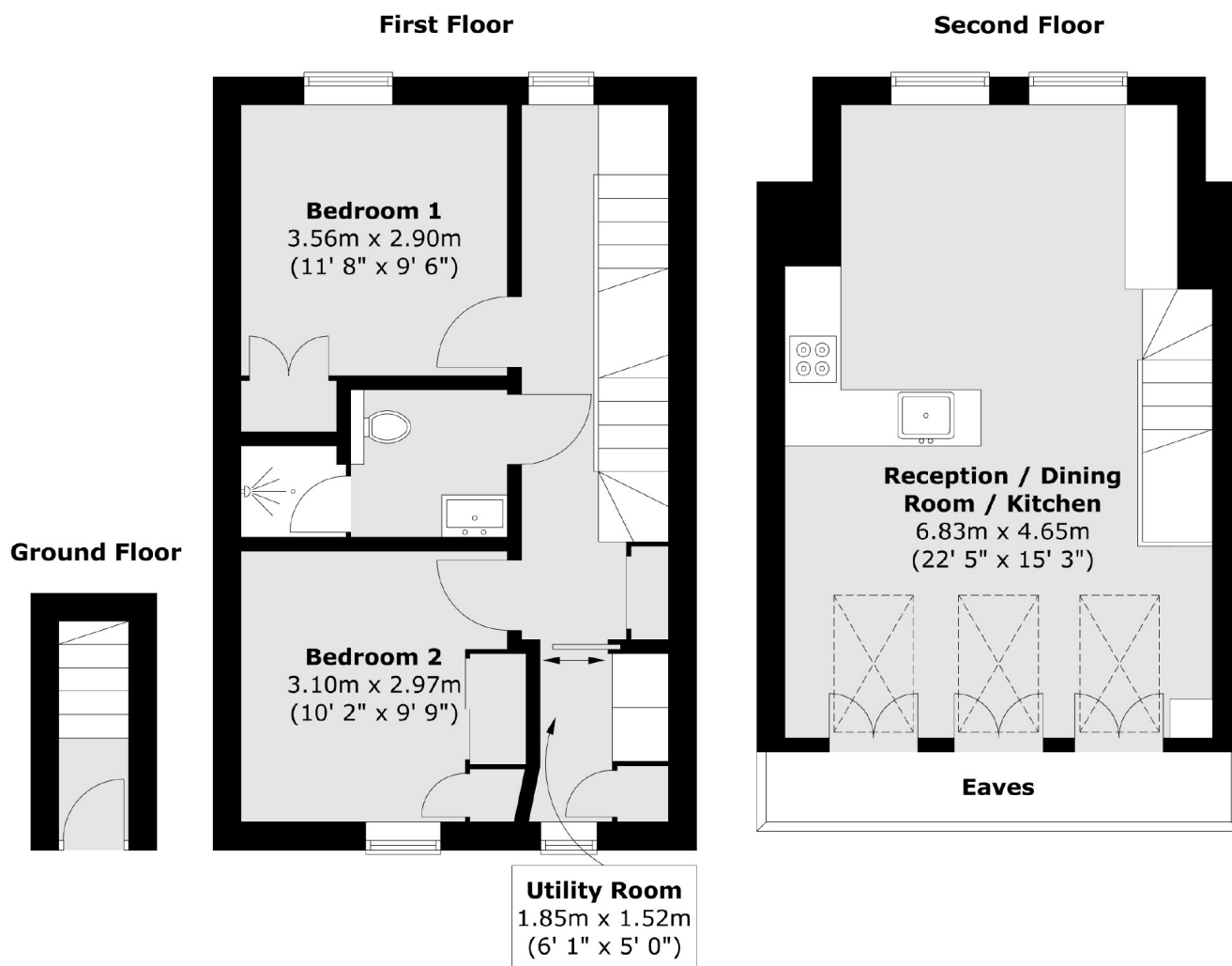
A stylish split level, two bedroom apartment which has been architecturally designed in a contemporary style. Two equal double bedrooms with bespoke built in storage are accompanied by a modern family bathroom, and separate utility room. The top floor has been converted in an incredible loft style reception, kitchen and entertaining space with cleverly designed windows and dual aspect bringing in lots of natural light.

Windmill Road is well placed for easy access to Brentford (National Rail), Northfields and South Ealing (Piccadilly). The Thames riverside and Brentford Marina is walking distance with a superb selection of cafés, pubs and restaurants to choose from. The M4/A4 is on the doorstep for access into and out of London by car.

• Industrial Loft Style • Two Bedrooms • Split Level • Utility Room • Large Windows • Share of Freehold •

FLETCHERS

ESTATE AGENTS



Total area (approx.) : 68.1 sq. m (733 sq. ft)

Fletchers Chiswick Turnham Green Sales
58 Turnham Green Terrace, London, W4 1QP
020 8987 3000
chiswicksales@fletcherestates.com

Energy Rating: C. We aim to make our particulars both accurate and reliable. However they are not guaranteed; nor do they form part of an offer or contract. If you require clarification on any points then please contact us, especially if you're traveling some distance to view. Please note that appliances and heating systems have not been tested and therefore no warranties can be given as to their good working order.