

# FLETCHERS

ESTATE AGENTS



## Acton Lane, W4

£1,150,000

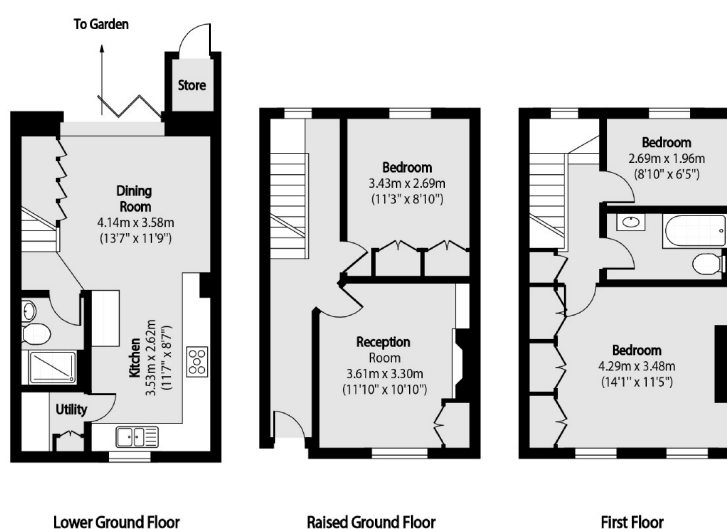
A beautiful three bedroom home arranged over three floors with a large kitchen dinner, opening out to an immaculate east facing landscaped garden, separate reception room and three bedrooms on the upper floors.

There is easy access to Turnham Green tube station, Chiswick Park tube station, South Acton train station and the 94 bus stop, as well as a great range of independent retailers and restaurants on Chiswick High Road and Turnham Green Terrace.

- Two Bathrooms • Utility Room • Loft Space • Double Glazing • Roof Replaced 2019 • Great Transport Links •

# FLETCHERS

## ESTATE AGENTS



Total area (approx): 90.86 sq m (978 sq. ft)  
(Excluding Store)

Fletchers Chiswick Turnham Green Sales  
58 Turnham Green Terrace, London, W4 1QP  
020 8987 3000  
[chiswicksales@fletcherestates.com](mailto:chiswicksales@fletcherestates.com)

Energy Rating: D. We aim to make our particulars both accurate and reliable. However they are not guaranteed; nor do they form part of an offer or contract. If you require clarification on any points then please contact us, especially if you're traveling some distance to view. Please note that appliances and heating systems have not been tested and therefore no warranties can be given as to their good working order.