

FLETCHERS

ESTATE AGENTS



The Avenue, W4

£740,000

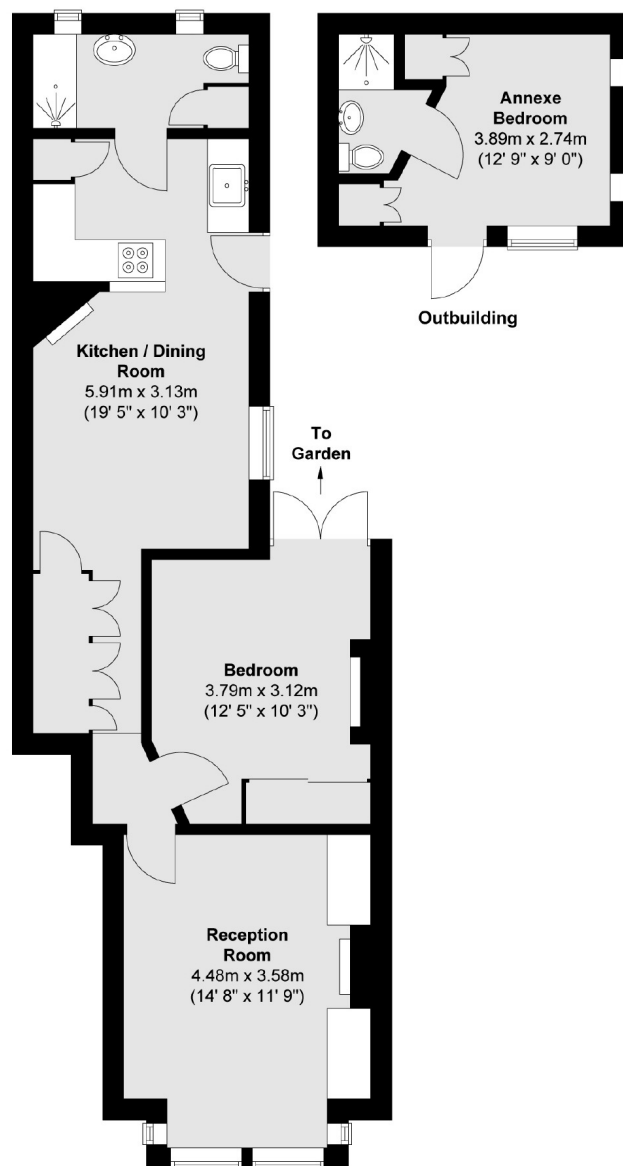
A rare to find, spacious ground floor flat in the sought after Bedford Park area with the benefits of a private garden, private entrance and a detached garden room/office.

The Avenue is a tree lined residential road in the much sought after Bedford Park, with a selection of boutique's, cafés and restaurants available locally on Turnham Green Terrace and Chiswick High Road, as well as Turnham Green underground station.

- Bedford Park • No Onward Chain • Private Garden • Two Bathrooms • Private Entrance • Turnham Green Station •

FLETCHERS

ESTATE AGENTS



Total area (approx.) : 56.8 sq. m (611 sq. ft)
Total annexe area (approx.) : 10.9 sq. m (117 sq. ft)

Fletchers Chiswick Turnham Green Sales
58 Turnham Green Terrace, London, W4 1QP
020 8987 3000
chiswicksales@fletcherestates.com

Energy Rating: D. We aim to make our particulars both accurate and reliable. However they are not guaranteed; nor do they form part of an offer or contract. If you require clarification on any points then please contact us, especially if you're traveling some distance to view. Please note that appliances and heating systems have not been tested and therefore no warranties can be given as to their good working order.